

Test Report

No.: ETR23A04247

Date: 31-Oct-2023

Page: 1 of 18

SHINKO ELECTRIC INDUSTRIES CO., LTD.
80 OSHIMADA-MACHI, NAGANO-SHI, 381-2287 JAPAN

The following sample(s) was/were submitted and identified by the applicant as:

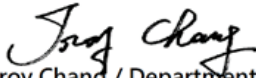
Sample Submitted By : SHINKO ELECTRIC INDUSTRIES CO., LTD.
Sample Name : Ag PLATING


Sample Receiving Date : 23-Oct-2023
Testing Period : 23-Oct-2023 to 31-Oct-2023

Test Requested : (1) As specified by client, with reference to RoHS 2011/65/EU Annex II and amending Directive (EU) 2015/863 to determine Cadmium, Lead, Mercury, Cr(VI), PBBs, PBDEs, DBP, BBP, DEHP, DIBP contents in the submitted sample(s).
(2) Please refer to next pages for the other item(s).

Test Results : Please refer to following pages.

Conclusion : (1) Based on the performed tests on submitted sample(s), the test results of Cadmium, Lead, Mercury, Cr(VI), PBBs, PBDEs, DBP, BBP, DEHP, DIBP comply with the limits as set by RoHS Directive (EU) 2015/863 amending Annex II to Directive 2011/65/EU.


Troy Chang / Department Manager
Signed for and on behalf of
SGS TAIWAN LTD.
Chemical Laboratory - Taipei



PIN CODE: E814D1B9

This document is issued by the Company subject to its General Conditions of Service printed overleaf, available on request or accessible at <https://www.sgs.com.tw/terms-of-service> and, for electronic format documents, subject to Terms and Conditions for Electronic Documents at <https://www.sgs.com.tw/terms-of-service>. Attention is drawn to the limitation of liability, indemnification and jurisdiction issues defined therein. Any holder of this document is advised that information contained hereon reflects the Company's findings at the time of its intervention only and within the limits of client's instruction, if any. The Company's sole responsibility is to its Client and this document does not exonerate parties to a transaction from exercising all their rights and obligations under the transaction documents. This document cannot be reproduced, except in full, without prior written approval of the Company. Any unauthorized alteration, forgery or falsification of the content or appearance of this document is unlawful and offenders may be prosecuted to the fullest extent of the law. Unless otherwise stated the results shown in this test report refer only to the sample(s) tested.



Test Report

No.: ETR23A04247

Date: 31-Oct-2023

Page: 2 of 18

SHINKO ELECTRIC INDUSTRIES CO., LTD.
80 OSHIMADA-MACHI, NAGANO-SHI, 381-2287 JAPAN

Test Part Description

No.1 : SILVER-WHITE METAL SHEET

Test Result(s)

Test Item(s)	Method	Unit	MDL	Result	Limit
				No.1	
Cadmium (Cd)	With reference to IEC 62321-5: 2013, analysis was performed by ICP-OES.	mg/kg	2	n.d.	100
Lead (Pb)	With reference to IEC 62321-5: 2013, analysis was performed by ICP-OES.	mg/kg	2	n.d.	1000
Mercury (Hg)	With reference to IEC 62321-4: 2013+ AMD1: 2017, analysis was performed by ICP-OES.	mg/kg	2	n.d.	1000
Hexavalent Chromium Cr(VI) (#2)	With reference to IEC 62321-7-1: 2015, analysis was performed by UV-VIS.	µg/cm ²	0.1	n.d.	-
Monobromobiphenyl	With reference to IEC 62321-6: 2015, analysis was performed by GC/MS.	mg/kg	5	n.d.	-
Dibromobiphenyl		mg/kg	5	n.d.	-
Tribromobiphenyl		mg/kg	5	n.d.	-
Tetrabromobiphenyl		mg/kg	5	n.d.	-
Pentabromobiphenyl		mg/kg	5	n.d.	-
Hexabromobiphenyl		mg/kg	5	n.d.	-
Heptabromobiphenyl		mg/kg	5	n.d.	-
Octabromobiphenyl		mg/kg	5	n.d.	-
Nonabromobiphenyl		mg/kg	5	n.d.	-
Decabromobiphenyl		mg/kg	5	n.d.	-
Sum of PBBs		mg/kg	-	n.d.	1000
Monobromodiphenyl ether		mg/kg	5	n.d.	-
Dibromodiphenyl ether		mg/kg	5	n.d.	-
Tribromodiphenyl ether		mg/kg	5	n.d.	-
Tetrabromodiphenyl ether		mg/kg	5	n.d.	-
Pentabromodiphenyl ether		mg/kg	5	n.d.	-
Hexabromodiphenyl ether	mg/kg	5	n.d.	-	
Heptabromodiphenyl ether	mg/kg	5	n.d.	-	
Octabromodiphenyl ether	mg/kg	5	n.d.	-	
Nonabromodiphenyl ether	mg/kg	5	n.d.	-	
Decabromodiphenyl ether	mg/kg	5	n.d.	-	
Sum of PBDEs	mg/kg	-	n.d.	1000	

This document is issued by the Company subject to its General Conditions of Service printed overleaf, available on request or accessible at <https://www.sgs.com.tw/terms-of-service> and, for electronic format documents, subject to Terms and Conditions for Electronic Documents at <https://www.sgs.com.tw/terms-of-service>. Attention is drawn to the limitation of liability, indemnification and jurisdiction issues defined therein. Any holder of this document is advised that information contained hereon reflects the Company's findings at the time of its intervention only and within the limits of client's instruction, if any. The Company's sole responsibility is to its Client and this document does not exonerate parties to a transaction from exercising all their rights and obligations under the transaction documents. This document cannot be reproduced, except in full, without prior written approval of the Company. Any unauthorized alteration, forgery or falsification of the content or appearance of this document is unlawful and offenders may be prosecuted to the fullest extent of the law. Unless otherwise stated the results shown in this test report refer only to the sample(s) tested.

Test Report

No.: ETR23A04247

Date: 31-Oct-2023

Page: 3 of 18

SHINKO ELECTRIC INDUSTRIES CO., LTD.
80 OSHIMADA-MACHI, NAGANO-SHI, 381-2287 JAPAN

Test Item(s)	Method	Unit	MDL	Result	Limit
				No.1	
Butyl benzyl phthalate (BBP)	With reference to IEC 62321-8: 2017, analysis was performed by GC/MS.	mg/kg	50	n.d.	1000
Dibutyl phthalate (DBP)	With reference to IEC 62321-8: 2017, analysis was performed by GC/MS.	mg/kg	50	n.d.	1000
Di-(2-ethylhexyl) phthalate (DEHP)	With reference to IEC 62321-8: 2017, analysis was performed by GC/MS.	mg/kg	50	n.d.	1000
Diisobutyl phthalate (DIBP)	With reference to IEC 62321-8: 2017, analysis was performed by GC/MS.	mg/kg	50	n.d.	1000
Diisodecyl phthalate (DIDP) (CAS No.: 26761-40-0, 68515-49-1)	With reference to IEC 62321-8: 2017, analysis was performed by GC/MS.	mg/kg	50	n.d.	-
Diisononyl phthalate (DINP) (CAS No.: 28553-12-0, 68515-48-0)	With reference to IEC 62321-8: 2017, analysis was performed by GC/MS.	mg/kg	50	n.d.	-
Di-n-octyl phthalate (DNOP) (CAS No.: 117-84-0)	With reference to IEC 62321-8: 2017, analysis was performed by GC/MS.	mg/kg	50	n.d.	-
Bis(2-methoxyethyl) phthalate (DMEP) (CAS No.: 117-82-8)	With reference to IEC 62321-8: 2017, analysis was performed by GC/MS.	mg/kg	50	n.d.	-
Di-n-pentyl phthalate (DNPP) (CAS No.: 131-18-0)	With reference to IEC 62321-8: 2017, analysis was performed by GC/MS.	mg/kg	50	n.d.	-
Di-n-hexyl phthalate (DNHP) (CAS No.: 84-75-3)	With reference to IEC 62321-8: 2017, analysis was performed by GC/MS.	mg/kg	50	n.d.	-
1,2-Benzenedicarboxylic acid, di-C6-8-branched alkyl esters, C7-rich (DIHP) (CAS No.: 71888-89-6)	With reference to IEC 62321-8: 2017, analysis was performed by GC/MS.	mg/kg	50	n.d.	-
1,2-Benzenedicarboxylic acid, di-C7-11-branched and linear alkyl esters (DHNUP) (CAS No.: 68515-42-4)	With reference to IEC 62321-8: 2017, analysis was performed by GC/MS.	mg/kg	50	n.d.	-
Hexabromocyclododecane (HBCDD) and all major diastereoisomers identified (α - HBCDD, β - HBCDD, γ - HBCDD) (CAS No.: 25637-99-4, 3194-55-6 (134237-51-7, 134237-50-6, 134237-52-8))	With reference to IEC 62321-9: 2021, analysis was performed by GC/MS.	mg/kg	20	n.d.	-

This document is issued by the Company subject to its General Conditions of Service printed overleaf, available on request or accessible at <https://www.sgs.com.tw/terms-of-service> and, for electronic format documents, subject to Terms and Conditions for Electronic Documents at <https://www.sgs.com.tw/terms-of-service>. Attention is drawn to the limitation of liability, indemnification and jurisdiction issues defined therein. Any holder of this document is advised that information contained hereon reflects the Company's findings at the time of its intervention only and within the limits of client's instruction, if any. The Company's sole responsibility is to its Client and this document does not exonerate parties to a transaction from exercising all their rights and obligations under the transaction documents. This document cannot be reproduced, except in full, without prior written approval of the Company. Any unauthorized alteration, forgery or falsification of the content or appearance of this document is unlawful and offenders may be prosecuted to the fullest extent of the law. Unless otherwise stated the results shown in this test report refer only to the sample(s) tested.



Test Report

No.: ETR23A04247

Date: 31-Oct-2023

Page: 4 of 18

SHINKO ELECTRIC INDUSTRIES CO., LTD.
80 OSHIMADA-MACHI, NAGANO-SHI, 381-2287 JAPAN

Test Item(s)	Method	Unit	MDL	Result	Limit
				No.1	
Fluorine (F) (CAS No.: 14762-94-8)	With reference to BS EN 14582: 2016, analysis was performed by IC.	mg/kg	50	n.d.	-
Chlorine (Cl) (CAS No.: 22537-15-1)	With reference to BS EN 14582: 2016, analysis was performed by IC.	mg/kg	50	n.d.	-
Bromine (Br) (CAS No.: 10097-32-2)	With reference to BS EN 14582: 2016, analysis was performed by IC.	mg/kg	50	n.d.	-
Iodine (I) (CAS No.: 14362-44-8)	With reference to BS EN 14582: 2016, analysis was performed by IC.	mg/kg	50	n.d.	-
PFOS and its salts (CAS No.: 1763-23-1 and its salts)	With reference to CEN/TS 15968: 2010, analysis was performed by LC/MS/MS.	mg/kg	0.01	n.d.	-
PFOA and its salts (CAS No.: 335-67-1 and its salts)	With reference to CEN/TS 15968: 2010, analysis was performed by LC/MS/MS.	mg/kg	0.01	n.d.	-
Polyvinyl chloride (PVC)	With reference to ASTM E1252: 2021, analysis was performed by FT-IR and Flame Test.	**	-	Negative	-
Polychlorinated biphenyls (PCBs)	With reference to US EPA 3550C: 2007, analysis was performed by GC/MS.	mg/kg	0.5	n.d.	-
Polychlorinated naphthalene (PCNs)	With reference to US EPA 3550C: 2007, analysis was performed by GC/MS.	mg/kg	5	n.d.	-
Polychlorinated terphenyls (PCTs)	With reference to US EPA 3550C: 2007, analysis was performed by GC/MS.	mg/kg	0.5	n.d.	-
Short Chain Chlorinated Paraffins(C10-C13) (SCCP) (CAS No.: 85535-84-8)	With reference to ISO 18219-1: 2021, analysis was performed by GC/MS.	mg/kg	50	n.d.	-
Tributyl tin (TBT)	With reference to ISO 17353: 2004, analysis was performed by GC/FPD.	mg/kg	0.03	n.d.	-
Bis(tributyltin) oxide (TBTO) (CAS No.: 56-35-9)	Calculated from the result of Tributyl Tin (TBT).	mg/kg	0.03▲	n.d.	-
Triphenyl tin (TPT)	With reference to ISO 17353: 2004, analysis was performed by GC/FPD.	mg/kg	0.03	n.d.	-
Dibutyl tin (DBT)	With reference to ISO 17353: 2004, analysis was performed by GC/FPD.	mg/kg	0.03	n.d.	-
Diocetyl tin (DOT)	With reference to ISO 17353: 2004, analysis was performed by GC/FPD.	mg/kg	0.03	n.d.	-
Bisphenol A (CAS No.: 80-05-7)	With reference to RSTS-CHEM-239-1, analysis was performed by LC/MS/MS.	mg/kg	1	n.d.	-

This document is issued by the Company subject to its General Conditions of Service printed overleaf, available on request or accessible at <https://www.sgs.com.tw/terms-of-service> and, for electronic format documents, subject to Terms and Conditions for Electronic Documents at <https://www.sgs.com.tw/terms-of-service>. Attention is drawn to the limitation of liability, indemnification and jurisdiction issues defined therein. Any holder of this document is advised that information contained hereon reflects the Company's findings at the time of its intervention only and within the limits of client's instruction, if any. The Company's sole responsibility is to its Client and this document does not exonerate parties to a transaction from exercising all their rights and obligations under the transaction documents. This document cannot be reproduced, except in full, without prior written approval of the Company. Any unauthorized alteration, forgery or falsification of the content or appearance of this document is unlawful and offenders may be prosecuted to the fullest extent of the law. Unless otherwise stated the results shown in this test report refer only to the sample(s) tested.

Test Report

No.: ETR23A04247

Date: 31-Oct-2023

Page: 5 of 18

SHINKO ELECTRIC INDUSTRIES CO., LTD.
80 OSHIMADA-MACHI, NAGANO-SHI, 381-2287 JAPAN

Test Item(s)	Method	Unit	MDL	Result	Limit
				No.1	
Antimony (Sb) (CAS No.: 7440-36-0)	With reference to US EPA 3052: 1996, analysis was performed by ICP-OES.	mg/kg	2	n.d.	-
Beryllium (Be) (CAS No.: 7440-41-7)	With reference to US EPA 3052: 1996, analysis was performed by ICP-OES.	mg/kg	2	n.d.	-
Arsenic (As) (CAS No.: 7440-38-2)	With reference to US EPA 3052: 1996, analysis was performed by ICP-OES.	mg/kg	2	n.d.	-

Note :

1. mg/kg = ppm ; 0.1wt% = 0.1% = 1000ppm
2. MDL = Method Detection Limit
3. n.d. = Not Detected (Less than MDL)
4. "-" = Not Regulated
5. **= Qualitative analysis (No Unit)
6. Negative = Undetectable ; Positive = Detectable
7. (#2) =
 - a. The sample is positive for Cr(VI) if the Cr(VI) concentration is greater than 0.13 µg/cm². The sample coating is considered to contain Cr(VI).
 - b. The sample is negative for Cr(VI) if Cr(VI) is n.d. (concentration less than 0.10 µg/cm²). The coating is considered a non-Cr(VI) based coating
 - c. The result between 0.10 µg/cm² and 0.13 µg/cm² is considered to be inconclusive - unavoidable coating variations may influence the determination.
8. ▲ : The MDL was evaluated for element / tested substance.

Conversion Formula : $AX = A \times F$

AX	A	F
Bis(tributyltin)oxide (TBTO)	Tributyl Tin (TBT)	1.0276

Parameter Conversion Table : https://eecloud.sgs.com/Region_TW/DocDownload.aspx?name=Others

9. Unless otherwise stated , the decision rule for conformity reporting is based on Binary Statement for Simple Acceptance Rule (w=0) stated in ILAC-G8:09/2019. According to this rule, the judgement of conformity is based on the comparing test results with limits.

This document is issued by the Company subject to its General Conditions of Service printed overleaf, available on request or accessible at <https://www.sgs.com.tw/terms-of-service> and, for electronic format documents, subject to Terms and Conditions for Electronic Documents at <https://www.sgs.com.tw/terms-of-service>. Attention is drawn to the limitation of liability, indemnification and jurisdiction issues defined therein. Any holder of this document is advised that information contained hereon reflects the Company's findings at the time of its intervention only and within the limits of client's instruction, if any. The Company's sole responsibility is to its Client and this document does not exonerate parties to a transaction from exercising all their rights and obligations under the transaction documents. This document cannot be reproduced, except in full, without prior written approval of the Company. Any unauthorized alteration, forgery or falsification of the content or appearance of this document is unlawful and offenders may be prosecuted to the fullest extent of the law. Unless otherwise stated the results shown in this test report refer only to the sample(s) tested.

SHINKO ELECTRIC INDUSTRIES CO., LTD.
80 OSHIMADA-MACHI, NAGANO-SHI, 381-2287 JAPAN

PFAS Remark :

The quantitative technology of PFAS is to analyze the specific structure of PFAS substances. However, PFAS acid and its salts with the same carbon number group have the same specific structure that can be identified. The tested results of the analyzed specific structure cannot be distinguished to identify the contribution from PFAS acid or its salts. Therefore, the tested results display the sum of concentrations of PFAS acids and its salts with the same carbon number group. The concentration of PFAS substances in the below table have been included in the tested results, please refer to the table for relevant information: (The listed PFAS substances are examples only, it do not include all PFAS salts with the same carbon number group.)

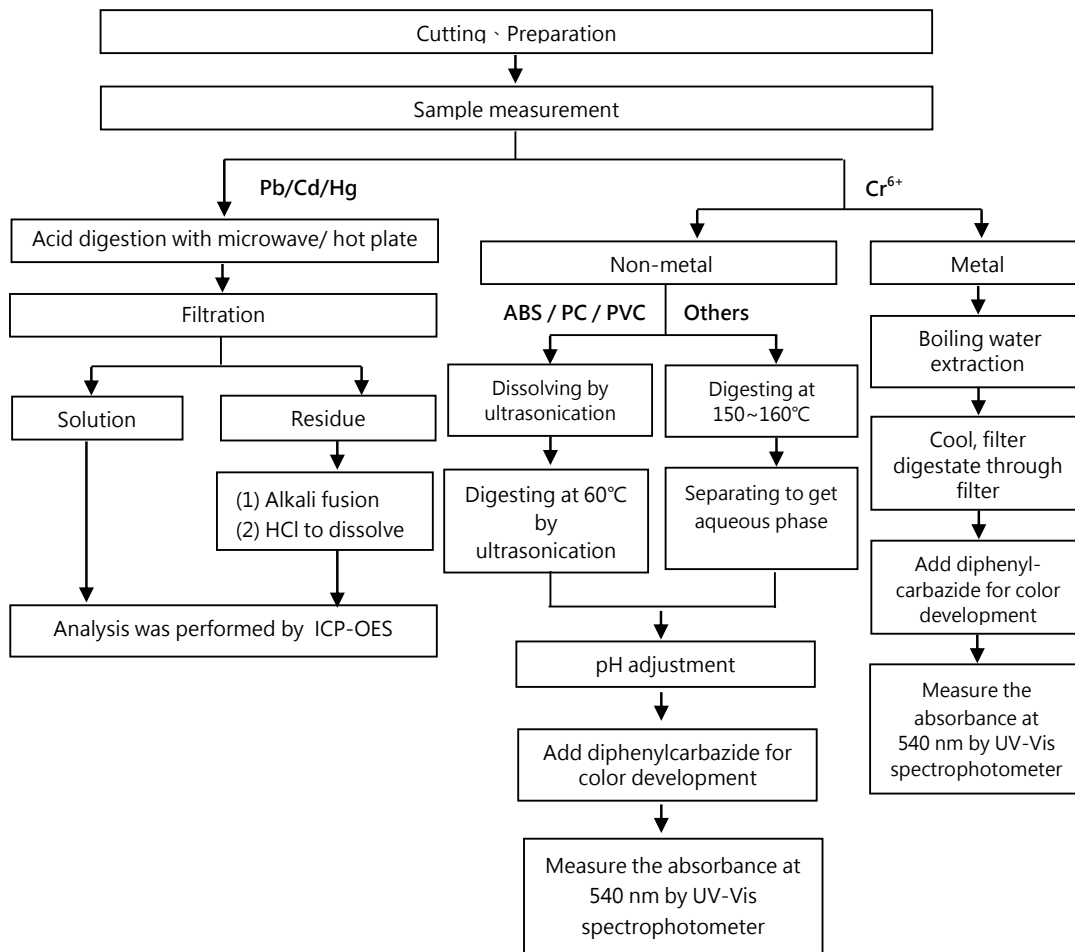
Classification of Substance Concentration	Substance Name	CAS No.
Perfluorooctane sulfonates and its salts (PFOS and its salts) (CAS No.: 1763-23-1 and its salts)	Potassium perfluorooctanesulfonate (PFOS-K)	2795-39-3
	Perfluorooctanesulfonic acid, lithium salt (PFOS-Li)	29457-72-5
	Perfluorooctanesulfonic acid, ammonium salt (PFOS-NH ₄)	29081-56-9
	Perfluorooctane sulfonate diethanolamine salt (PFOS-NH(OH) ₂)	70225-14-8
	Perfluorooctanesulfonic acid, tetraethylammonium salt (PFOS-N(C ₂ H ₅) ₄)	56773-42-3
	N-decyl-N,N-dimethyldecyl-1-aminium 1,1,2,2,3,3,4,4,5,5,6,6,7,7,8,8,8-heptadecafluorooctane-1-sulfonate (PFOS-DDA)	251099-16-8
	Perfluorooctane sulfonyl fluoride (POSF)	307-35-7
Perfluorooctane sulfonates and its salts (PFOS and its salts) (CAS No.: 1763-23-1 and its salts)	Perfluorooctanesulfonic acid, magnesium salt (PFOS-Mg)	91036-71-4
	Perfluorooctanesulfonic acid, sodium salt (PFOS-Na)	4021-47-0
Perfluorooctanoic acid and its salts (PFOA and its salts) (CAS No.: 335-67-1 and its salts)	Sodium perfluorooctanoate (PFOA-Na)	335-95-5
	Potassium perfluorooctanoate (PFOA-K)	2395-00-8
	Silver perfluorooctanoate (PFOA-Ag)	335-93-3
	Perfluorooctanoyl fluoride (PFOA-F)	335-66-0
	Ammonium pentadecafluorooctanoate (APFO)	3825-26-1
	Lithium perfluorooctanoate (PFOA-Li)	17125-58-5

This document is issued by the Company subject to its General Conditions of Service printed overleaf, available on request or accessible at <https://www.sgs.com.tw/terms-of-service> and, for electronic format documents, subject to Terms and Conditions for Electronic Documents at <https://www.sgs.com.tw/terms-of-service>. Attention is drawn to the limitation of liability, indemnification and jurisdiction issues defined therein. Any holder of this document is advised that information contained hereon reflects the Company's findings at the time of its intervention only and within the limits of client's instruction, if any. The Company's sole responsibility is to its Client and this document does not exonerate parties to a transaction from exercising all their rights and obligations under the transaction documents. This document cannot be reproduced, except in full, without prior written approval of the Company. Any unauthorized alteration, forgery or falsification of the content or appearance of this document is unlawful and offenders may be prosecuted to the fullest extent of the law. Unless otherwise stated the results shown in this test report refer only to the sample(s) tested.

Analytical flow chart of heavy metal

These samples were dissolved totally by pre-conditioning method according to below flow chart.

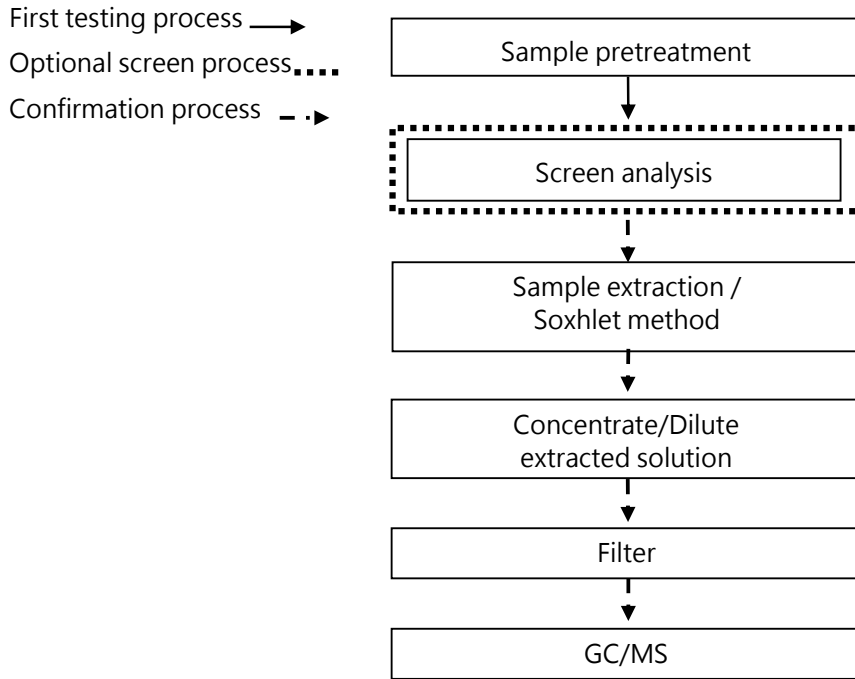
(Cr⁶⁺ test method excluded)



This document is issued by the Company subject to its General Conditions of Service printed overleaf, available on request or accessible at <https://www.sgs.com.tw/terms-of-service> and, for electronic format documents, subject to Terms and Conditions for Electronic Documents at <https://www.sgs.com.tw/terms-of-service>. Attention is drawn to the limitation of liability, indemnification and jurisdiction issues defined therein. Any holder of this document is advised that information contained hereon reflects the Company's findings at the time of its intervention only and within the limits of client's instruction, if any. The Company's sole responsibility is to its Client and this document does not exonerate parties to a transaction from exercising all their rights and obligations under the transaction documents. This document cannot be reproduced, except in full, without prior written approval of the Company. Any unauthorized alteration, forgery or falsification of the content or appearance of this document is unlawful and offenders may be prosecuted to the fullest extent of the law. Unless otherwise stated the results shown in this test report refer only to the sample(s) tested.

SHINKO ELECTRIC INDUSTRIES CO., LTD.
80 OSHIMADA-MACHI, NAGANO-SHI, 381-2287 JAPAN

Analytical flow chart – PBBs / PBDEs

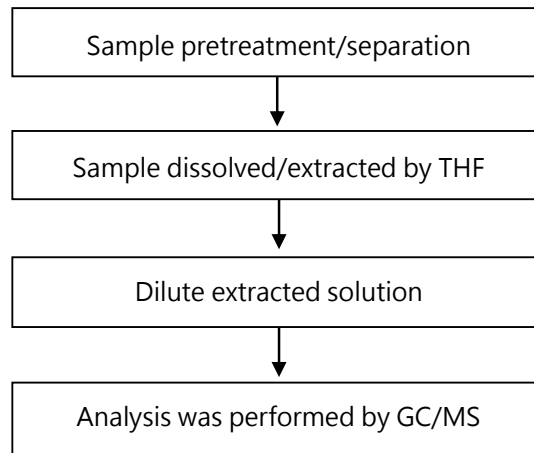


This document is issued by the Company subject to its General Conditions of Service printed overleaf, available on request or accessible at <https://www.sgs.com.tw/terms-of-service> and, for electronic format documents, subject to Terms and Conditions for Electronic Documents at <https://www.sgs.com.tw/terms-of-service>. Attention is drawn to the limitation of liability, indemnification and jurisdiction issues defined therein. Any holder of this document is advised that information contained hereon reflects the Company's findings at the time of its intervention only and within the limits of client's instruction, if any. The Company's sole responsibility is to its Client and this document does not exonerate parties to a transaction from exercising all their rights and obligations under the transaction documents. This document cannot be reproduced, except in full, without prior written approval of the Company. Any unauthorized alteration, forgery or falsification of the content or appearance of this document is unlawful and offenders may be prosecuted to the fullest extent of the law. Unless otherwise stated the results shown in this test report refer only to the sample(s) tested.

SHINKO ELECTRIC INDUSTRIES CO., LTD.
80 OSHIMADA-MACHI, NAGANO-SHI, 381-2287 JAPAN

Analytical flow chart - Phthalate

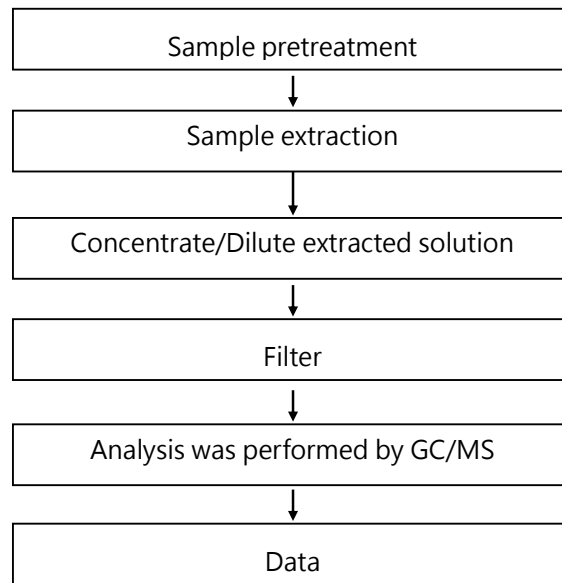
【Test method: IEC 62321-8】



This document is issued by the Company subject to its General Conditions of Service printed overleaf, available on request or accessible at <https://www.sgs.com.tw/terms-of-service> and, for electronic format documents, subject to Terms and Conditions for Electronic Documents at <https://www.sgs.com.tw/terms-of-service>. Attention is drawn to the limitation of liability, indemnification and jurisdiction issues defined therein. Any holder of this document is advised that information contained hereon reflects the Company's findings at the time of its intervention only and within the limits of client's instruction, if any. The Company's sole responsibility is to its Client and this document does not exonerate parties to a transaction from exercising all their rights and obligations under the transaction documents. This document cannot be reproduced, except in full, without prior written approval of the Company. Any unauthorized alteration, forgery or falsification of the content or appearance of this document is unlawful and offenders may be prosecuted to the fullest extent of the law. Unless otherwise stated the results shown in this test report refer only to the sample(s) tested.

SHINKO ELECTRIC INDUSTRIES CO., LTD.
80 OSHIMADA-MACHI, NAGANO-SHI, 381-2287 JAPAN

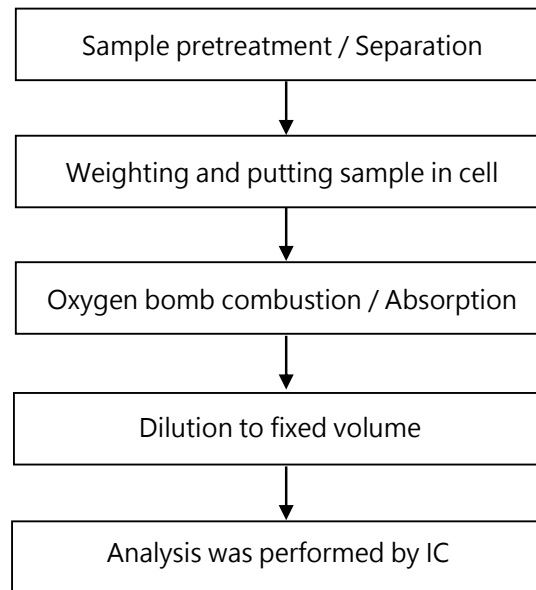
Analytical flow chart - HBCDD



This document is issued by the Company subject to its General Conditions of Service printed overleaf, available on request or accessible at <https://www.sgs.com.tw/terms-of-service> and, for electronic format documents, subject to Terms and Conditions for Electronic Documents at <https://www.sgs.com.tw/terms-of-service>. Attention is drawn to the limitation of liability, indemnification and jurisdiction issues defined therein. Any holder of this document is advised that information contained hereon reflects the Company's findings at the time of its intervention only and within the limits of client's instruction, if any. The Company's sole responsibility is to its Client and this document does not exonerate parties to a transaction from exercising all their rights and obligations under the transaction documents. This document cannot be reproduced, except in full, without prior written approval of the Company. Any unauthorized alteration, forgery or falsification of the content or appearance of this document is unlawful and offenders may be prosecuted to the fullest extent of the law. Unless otherwise stated the results shown in this test report refer only to the sample(s) tested.

SHINKO ELECTRIC INDUSTRIES CO., LTD.
80 OSHIMADA-MACHI, NAGANO-SHI, 381-2287 JAPAN

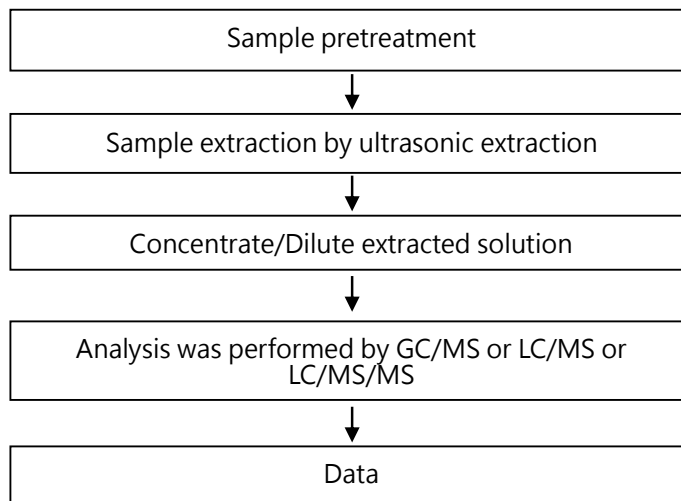
Analytical flow chart - Halogen



This document is issued by the Company subject to its General Conditions of Service printed overleaf, available on request or accessible at <https://www.sgs.com.tw/terms-of-service> and, for electronic format documents, subject to Terms and Conditions for Electronic Documents at <https://www.sgs.com.tw/terms-of-service>. Attention is drawn to the limitation of liability, indemnification and jurisdiction issues defined therein. Any holder of this document is advised that information contained hereon reflects the Company's findings at the time of its intervention only and within the limits of client's instruction, if any. The Company's sole responsibility is to its Client and this document does not exonerate parties to a transaction from exercising all their rights and obligations under the transaction documents. This document cannot be reproduced, except in full, without prior written approval of the Company. Any unauthorized alteration, forgery or falsification of the content or appearance of this document is unlawful and offenders may be prosecuted to the fullest extent of the law. Unless otherwise stated the results shown in this test report refer only to the sample(s) tested.

SHINKO ELECTRIC INDUSTRIES CO., LTD.
80 OSHIMADA-MACHI, NAGANO-SHI, 381-2287 JAPAN

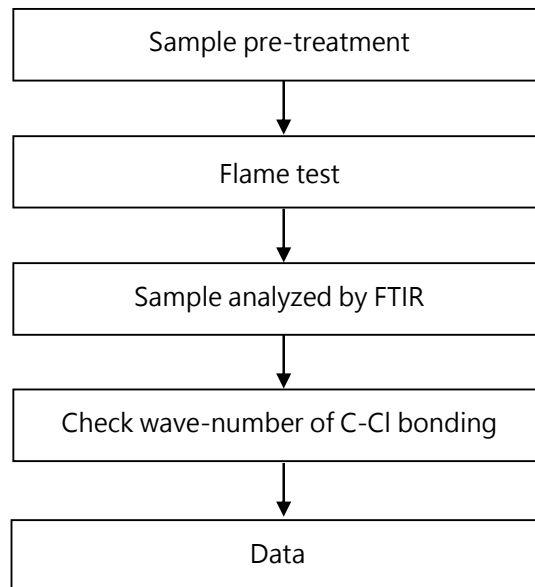
Analytical flow chart – PFAS (including PFOA/PFOS/its related compound, etc.)



This document is issued by the Company subject to its General Conditions of Service printed overleaf, available on request or accessible at <https://www.sgs.com.tw/terms-of-service> and, for electronic format documents, subject to Terms and Conditions for Electronic Documents at <https://www.sgs.com.tw/terms-of-service>. Attention is drawn to the limitation of liability, indemnification and jurisdiction issues defined therein. Any holder of this document is advised that information contained hereon reflects the Company's findings at the time of its intervention only and within the limits of client's instruction, if any. The Company's sole responsibility is to its Client and this document does not exonerate parties to a transaction from exercising all their rights and obligations under the transaction documents. This document cannot be reproduced, except in full, without prior written approval of the Company. Any unauthorized alteration, forgery or falsification of the content or appearance of this document is unlawful and offenders may be prosecuted to the fullest extent of the law. Unless otherwise stated the results shown in this test report refer only to the sample(s) tested.

SHINKO ELECTRIC INDUSTRIES CO., LTD.
80 OSHIMADA-MACHI, NAGANO-SHI, 381-2287 JAPAN

Analysis flow chart - PVC

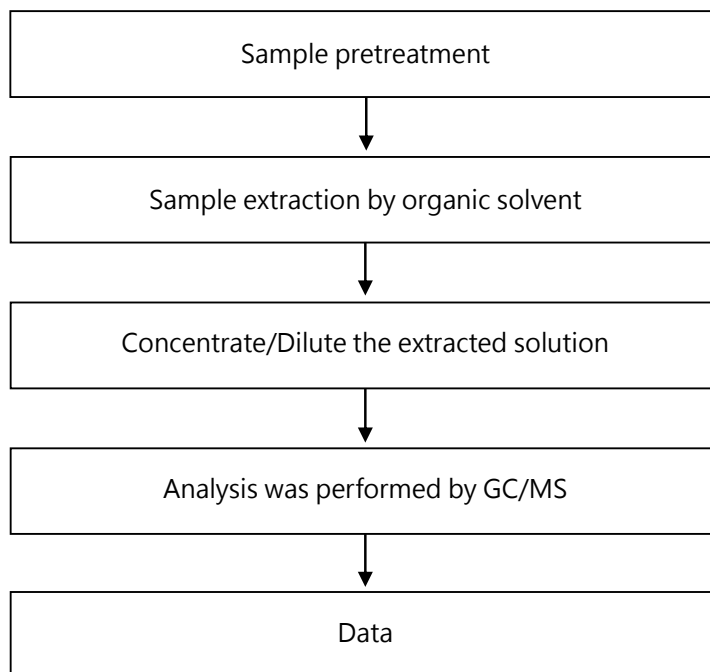


This document is issued by the Company subject to its General Conditions of Service printed overleaf, available on request or accessible at <https://www.sgs.com.tw/terms-of-service> and, for electronic format documents, subject to Terms and Conditions for Electronic Documents at <https://www.sgs.com.tw/terms-of-service>. Attention is drawn to the limitation of liability, indemnification and jurisdiction issues defined therein. Any holder of this document is advised that information contained hereon reflects the Company's findings at the time of its intervention only and within the limits of client's instruction, if any. The Company's sole responsibility is to its Client and this document does not exonerate parties to a transaction from exercising all their rights and obligations under the transaction documents. This document cannot be reproduced, except in full, without prior written approval of the Company. Any unauthorized alteration, forgery or falsification of the content or appearance of this document is unlawful and offenders may be prosecuted to the fullest extent of the law. Unless otherwise stated the results shown in this test report refer only to the sample(s) tested.

SHINKO ELECTRIC INDUSTRIES CO., LTD.
80 OSHIMADA-MACHI, NAGANO-SHI, 381-2287 JAPAN

Analytical flow chart

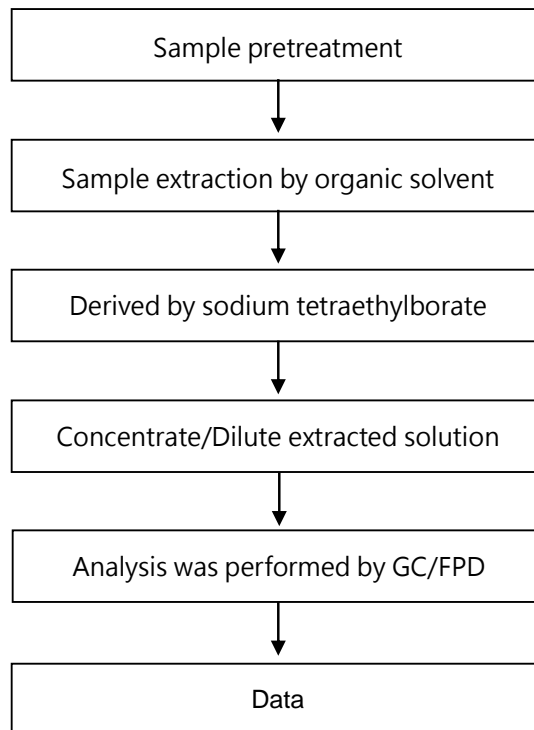
* Apply to: PCBs, PCNs, PCTs, Mirex, Chlorinated Paraffins, DBBT



This document is issued by the Company subject to its General Conditions of Service printed overleaf, available on request or accessible at <https://www.sgs.com.tw/terms-of-service> and, for electronic format documents, subject to Terms and Conditions for Electronic Documents at <https://www.sgs.com.tw/terms-of-service>. Attention is drawn to the limitation of liability, indemnification and jurisdiction issues defined therein. Any holder of this document is advised that information contained hereon reflects the Company's findings at the time of its intervention only and within the limits of client's instruction, if any. The Company's sole responsibility is to its Client and this document does not exonerate parties to a transaction from exercising all their rights and obligations under the transaction documents. This document cannot be reproduced, except in full, without prior written approval of the Company. Any unauthorized alteration, forgery or falsification of the content or appearance of this document is unlawful and offenders may be prosecuted to the fullest extent of the law. Unless otherwise stated the results shown in this test report refer only to the sample(s) tested.

SHINKO ELECTRIC INDUSTRIES CO., LTD.
80 OSHIMADA-MACHI, NAGANO-SHI, 381-2287 JAPAN

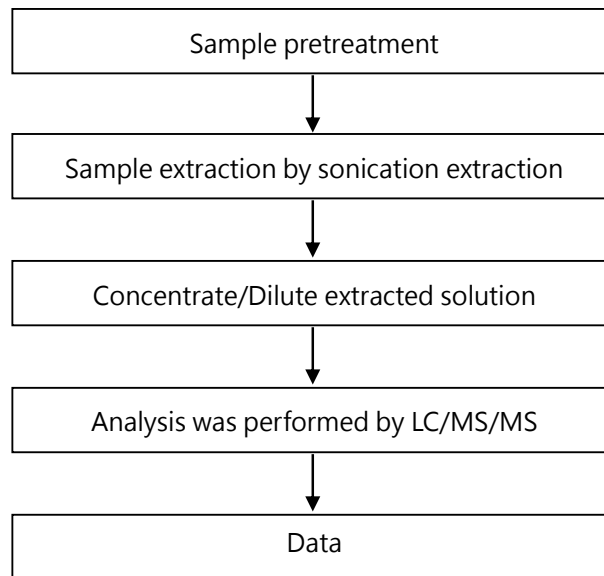
Analytical flow chart - Organic-Tin



This document is issued by the Company subject to its General Conditions of Service printed overleaf, available on request or accessible at <https://www.sgs.com.tw/terms-of-service> and, for electronic format documents, subject to Terms and Conditions for Electronic Documents at <https://www.sgs.com.tw/terms-of-service>. Attention is drawn to the limitation of liability, indemnification and jurisdiction issues defined therein. Any holder of this document is advised that information contained hereon reflects the Company's findings at the time of its intervention only and within the limits of client's instruction, if any. The Company's sole responsibility is to its Client and this document does not exonerate parties to a transaction from exercising all their rights and obligations under the transaction documents. This document cannot be reproduced, except in full, without prior written approval of the Company. Any unauthorized alteration, forgery or falsification of the content or appearance of this document is unlawful and offenders may be prosecuted to the fullest extent of the law. Unless otherwise stated the results shown in this test report refer only to the sample(s) tested.

SHINKO ELECTRIC INDUSTRIES CO., LTD.
80 OSHIMADA-MACHI, NAGANO-SHI, 381-2287 JAPAN

Analytical flow chart - Bisphenol A



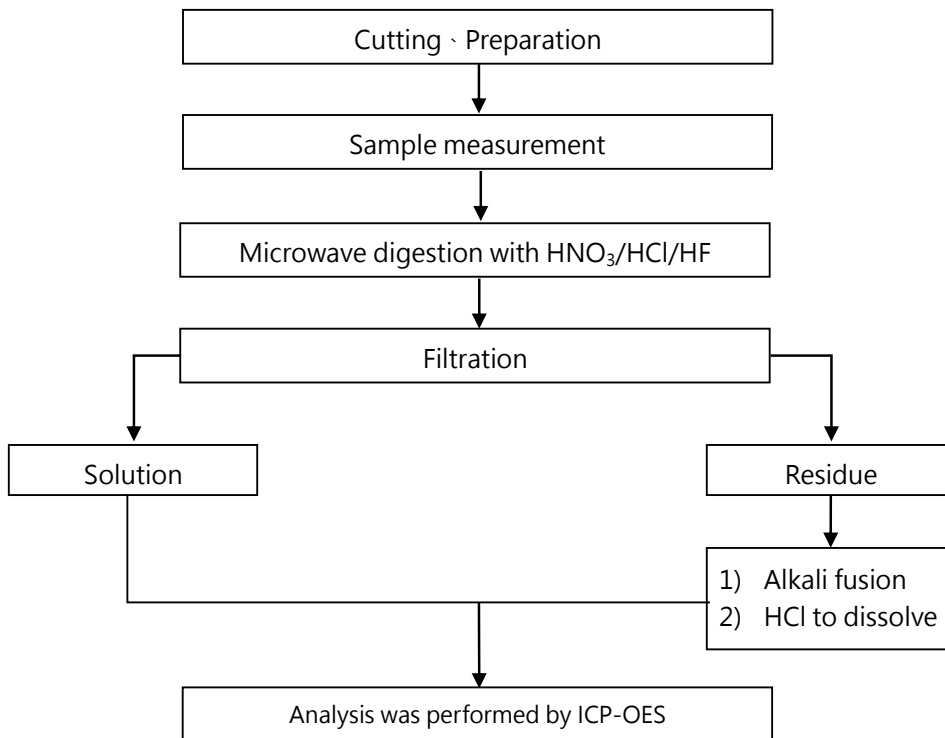
This document is issued by the Company subject to its General Conditions of Service printed overleaf, available on request or accessible at <https://www.sgs.com.tw/terms-of-service> and, for electronic format documents, subject to Terms and Conditions for Electronic Documents at <https://www.sgs.com.tw/terms-of-service>. Attention is drawn to the limitation of liability, indemnification and jurisdiction issues defined therein. Any holder of this document is advised that information contained hereon reflects the Company's findings at the time of its intervention only and within the limits of client's instruction, if any. The Company's sole responsibility is to its Client and this document does not exonerate parties to a transaction from exercising all their rights and obligations under the transaction documents. This document cannot be reproduced, except in full, without prior written approval of the Company. Any unauthorized alteration, forgery or falsification of the content or appearance of this document is unlawful and offenders may be prosecuted to the fullest extent of the law. Unless otherwise stated the results shown in this test report refer only to the sample(s) tested.

SHINKO ELECTRIC INDUSTRIES CO., LTD.
80 OSHIMADA-MACHI, NAGANO-SHI, 381-2287 JAPAN

Analytical flow chart of elements (Heavy metal included)

These samples were dissolved totally by pre-conditioning method according to below flow chart.

【Reference method : US EPA 3051A 、 US EPA 3052】



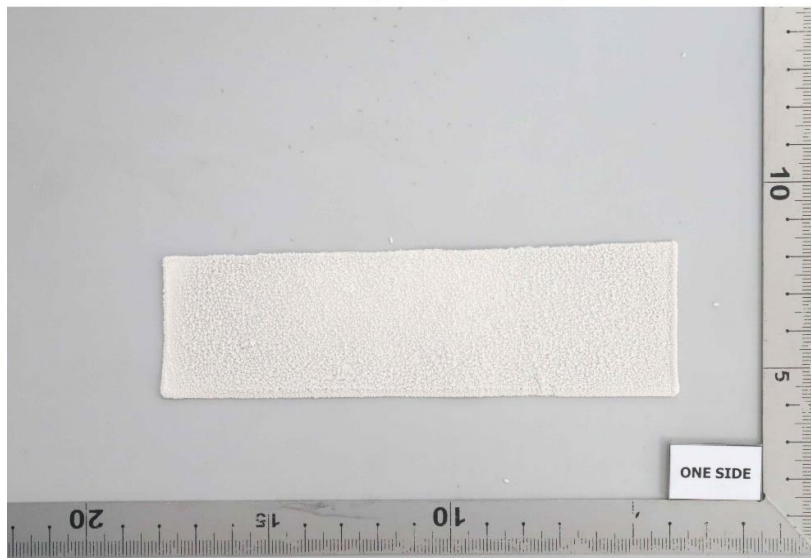
* US EPA 3051A method does not add HF.

This document is issued by the Company subject to its General Conditions of Service printed overleaf, available on request or accessible at <https://www.sgs.com.tw/terms-of-service> and, for electronic format documents, subject to Terms and Conditions for Electronic Documents at <https://www.sgs.com.tw/terms-of-service>. Attention is drawn to the limitation of liability, indemnification and jurisdiction issues defined therein. Any holder of this document is advised that information contained hereon reflects the Company's findings at the time of its intervention only and within the limits of client's instruction, if any. The Company's sole responsibility is to its Client and this document does not exonerate parties to a transaction from exercising all their rights and obligations under the transaction documents. This document cannot be reproduced, except in full, without prior written approval of the Company. Any unauthorized alteration, forgery or falsification of the content or appearance of this document is unlawful and offenders may be prosecuted to the fullest extent of the law. Unless otherwise stated the results shown in this test report refer only to the sample(s) tested.

SHINKO ELECTRIC INDUSTRIES CO., LTD.
80 OSHIMADA-MACHI, NAGANO-SHI, 381-2287 JAPAN

* The tested sample / part is marked by an arrow if it's shown on the photo. *

ETR23A04247



ETR23A04247



** End of Report **

This document is issued by the Company subject to its General Conditions of Service printed overleaf, available on request or accessible at <https://www.sgs.com.tw/terms-of-service> and, for electronic format documents, subject to Terms and Conditions for Electronic Documents at <https://www.sgs.com.tw/terms-of-service>. Attention is drawn to the limitation of liability, indemnification and jurisdiction issues defined therein. Any holder of this document is advised that information contained hereon reflects the Company's findings at the time of its intervention only and within the limits of client's instruction, if any. The Company's sole responsibility is to its Client and this document does not exonerate parties to a transaction from exercising all their rights and obligations under the transaction documents. This document cannot be reproduced, except in full, without prior written approval of the Company. Any unauthorized alteration, forgery or falsification of the content or appearance of this document is unlawful and offenders may be prosecuted to the fullest extent of the law. Unless otherwise stated the results shown in this test report refer only to the sample(s) tested.