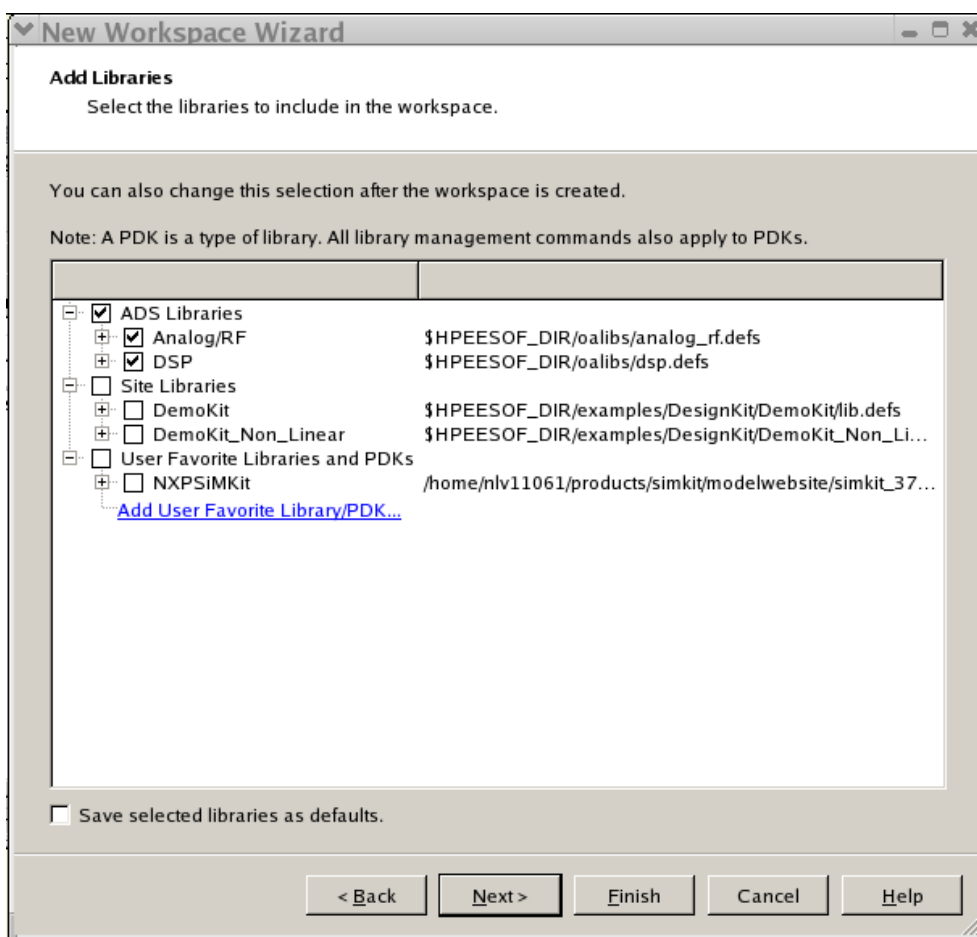


## Installation instructions for SiMKit for ADS 2011 or higher

1. Go to the directory where you would like to install SiMKit design kit. This directory is later referred to as \$HOME. Copy the installation file simkit\_<simkit version>\_pub\_designkit.zip to this directory. Unzip the file.
2. Start ADS.
3. Go to DesignKits > Manage Favorite Designkits > Add Library Definition file... and select the file \$HOME/simkit\_designkit/lib.defs via the file browser.
4. When starting a new workspace, you may choose NXPSiMKit by selecting the tick box in front of the name NXPSiMKit.

Figure 1 Open New project



5. For existing projects NXPSimkit can always be added via the ADS main window > DesignKits > Manage Libraries window, either via Add Library Definition File, or via Add Design Kit from Favorites (when NXPSiMKit is part of your favorite libraries).

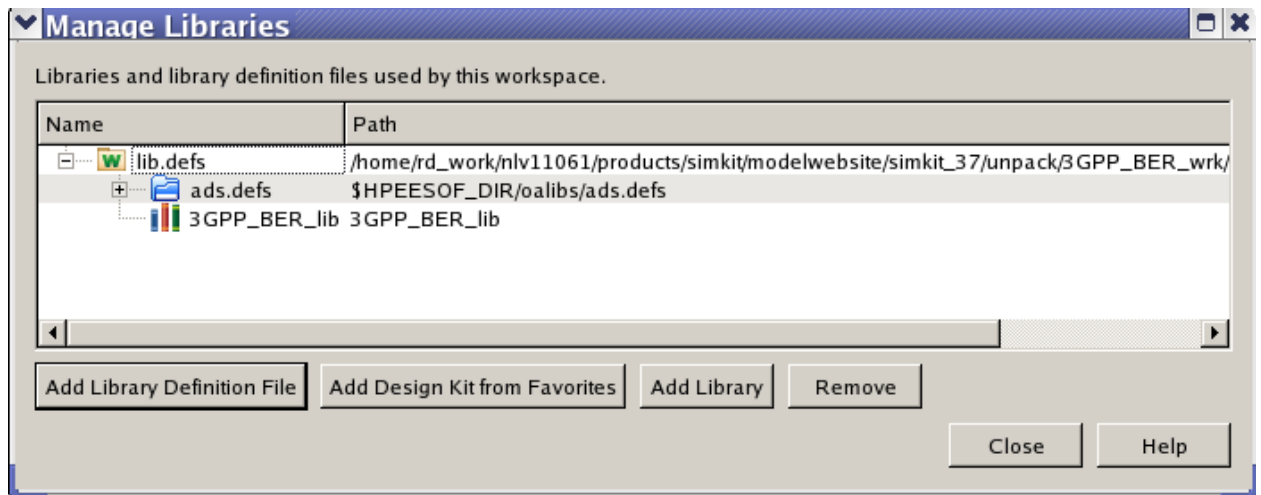


Figure 2 Manage Libraries

## Installation instructions for SiMKit for ADS 2009 and older

1. Go to the directory where you would like to install SiMKit design kit. This directory is later referred to as \$HOME. Copy the installation file simkit\_<simkit version>\_pub\_designkit.zip to this directory.
2. Start ADS.
3. Go to the menu item "DesignKit -> Install Design Kits".

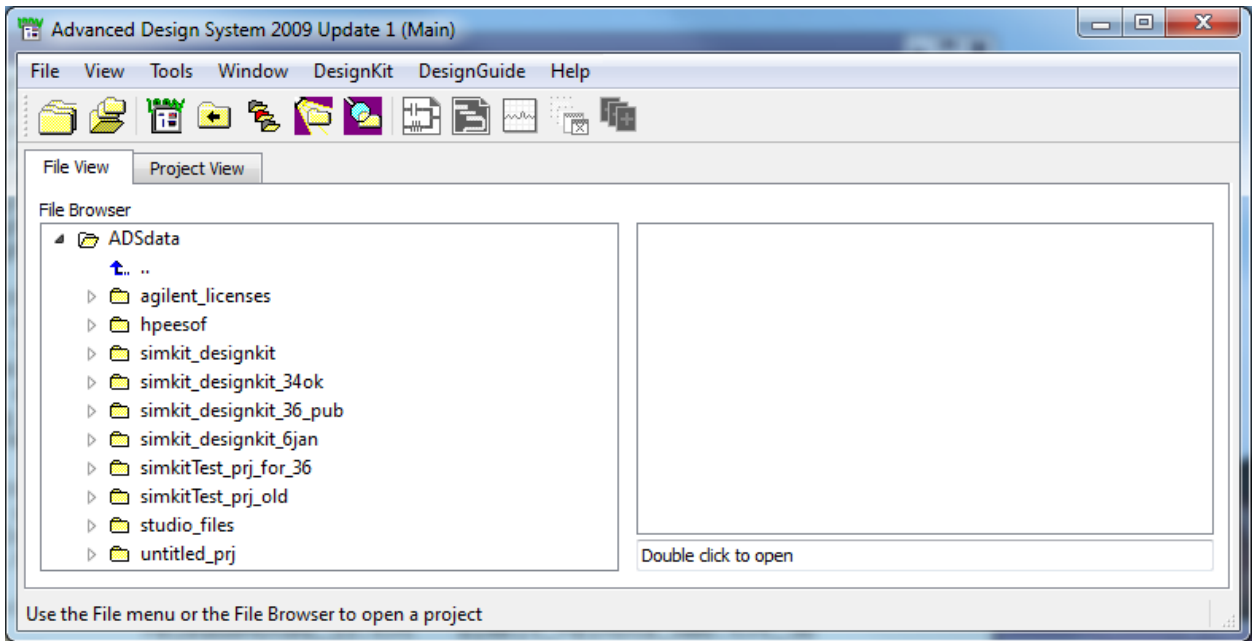
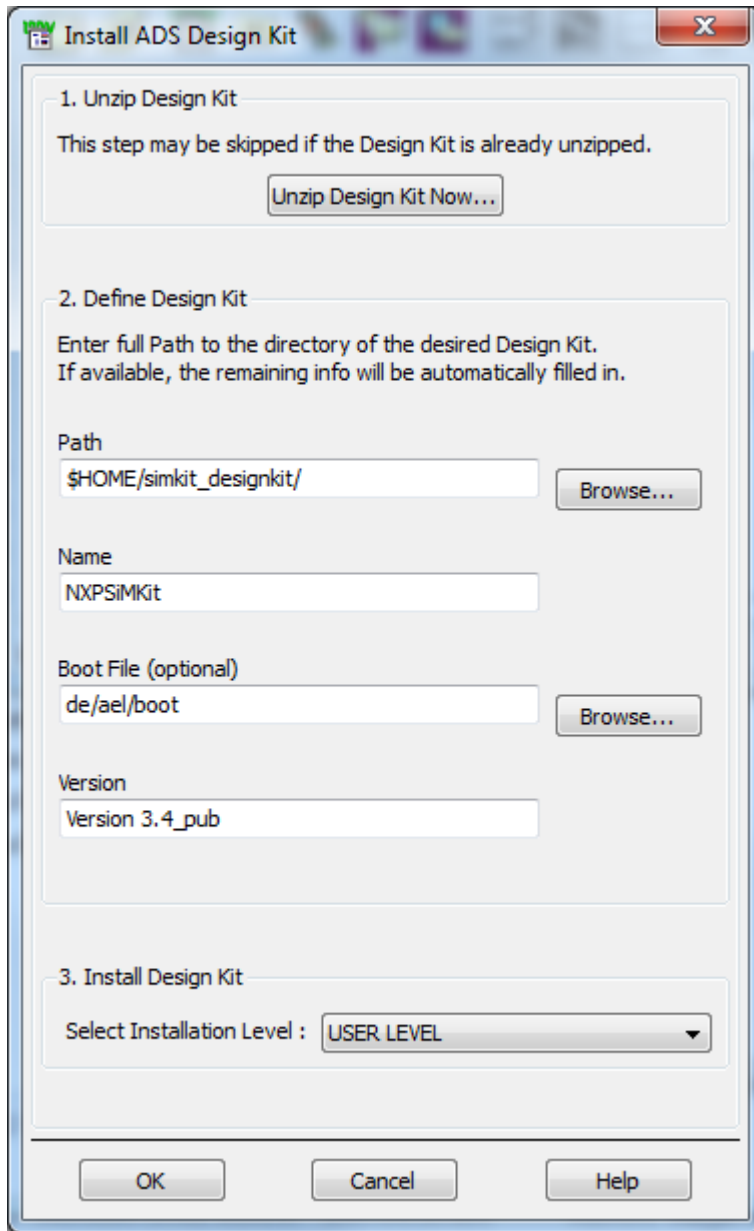
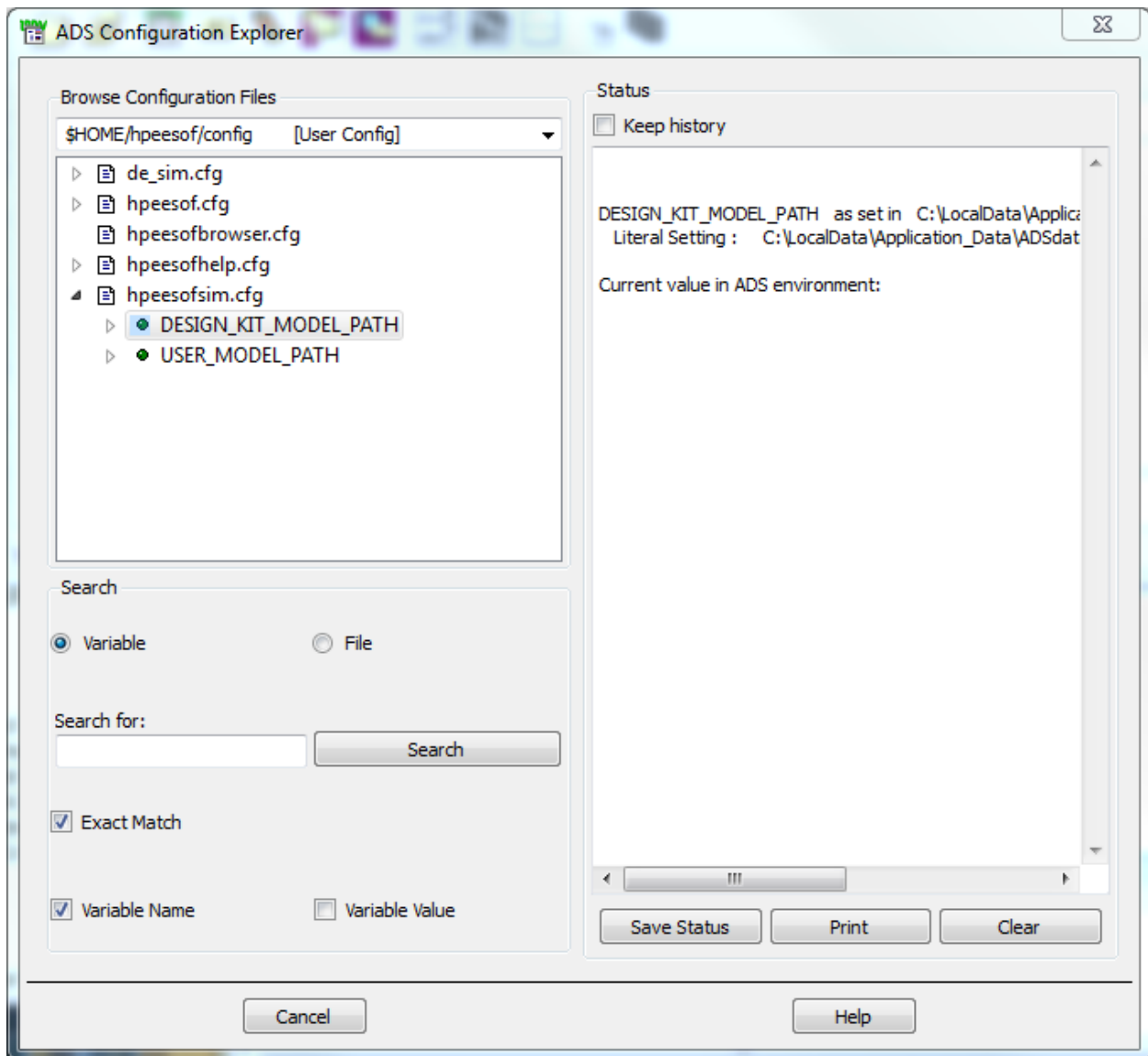


Figure 3 ADS main



**Figure 4 Install design kit**

4. Unzip the Design Kit \$HOME/simkit\_<simkit version>\_pub\_designkit.zip
5. Or, if the Design Kit is already unzipped, define the Design Kit (part 2 in the above picture)
6. For simulation with SiMKit libraries in this Design Kit the variable USER\_MODEL\_PATH must be set. This can be done in one of the files called hpeesofsim.cfg. The location of this file can be found via the menu item "Tools -> Configure Explorer".



**Figure 5 Configuration explorer**

7. Verify that the DESIGN\_KIT\_MODEL\_PATH is set to the same value as is specified in Figure 2, Install design kit, as the Path.
8. On Windows set

USER\_MODEL\_PATH=%USER\_MODEL\_PATH;%DESIGN\_KIT\_MODEL\_PATH  
and for Linux

USER\_MODEL\_PATH=\$USER\_MODEL\_PATH:\$DESIGN\_KIT\_MODEL\_PATH

9. Close ADS (to make the design kit changes effective)
10. On Linux add the library path to your LD\_LIBRARY\_PATH environment variable. Note that ADS will have created the directory \$HOME/simkit\_designkit/bin/. You will not find it in the zip file.

```
export LD_LIBRARY_PATH=$LD_LIBRARY_PATH:$HOME/simkit_designkit/bin/  
linux_x86/:$HOME/simkit_designkit/bin/linux_x86_64/
```

11. Note: When changing from an older SiMKit version to the most recent version of SiMKit, some files must be modified in order to switch to the design kit. The DESIGN\_KIT\_MODEL\_PATH variable in the following files must be modified:
  - de\_sim.cfg (located in the startup directory)
  - de\_sim.cfg (located in your project directory)
  - hpeesofsim.cfg (located in your project directory)
12. Now you can start ADS.