



FRDM Expansion Boards

Flexible, Rapid Development with MCUXpresso

Business Line Advanced Analog | October 2024, V6

| Public | NXP, and the NXP logo are trademarks of NXP B.V. All other product or service names are the property of their respective owners. © 2024 NXP B.V.





Agenda

1. [Advanced Analog Portfolio Summary](#)
2. [FRDM Expansion Boards Index](#)
3. [Technical support and Product Longevity](#)
4. [Summary Released FRDM Expansion Boards](#)

Advanced Analog Portfolio Summary

Energy Network – Precision Analog – Data Network



Automotive



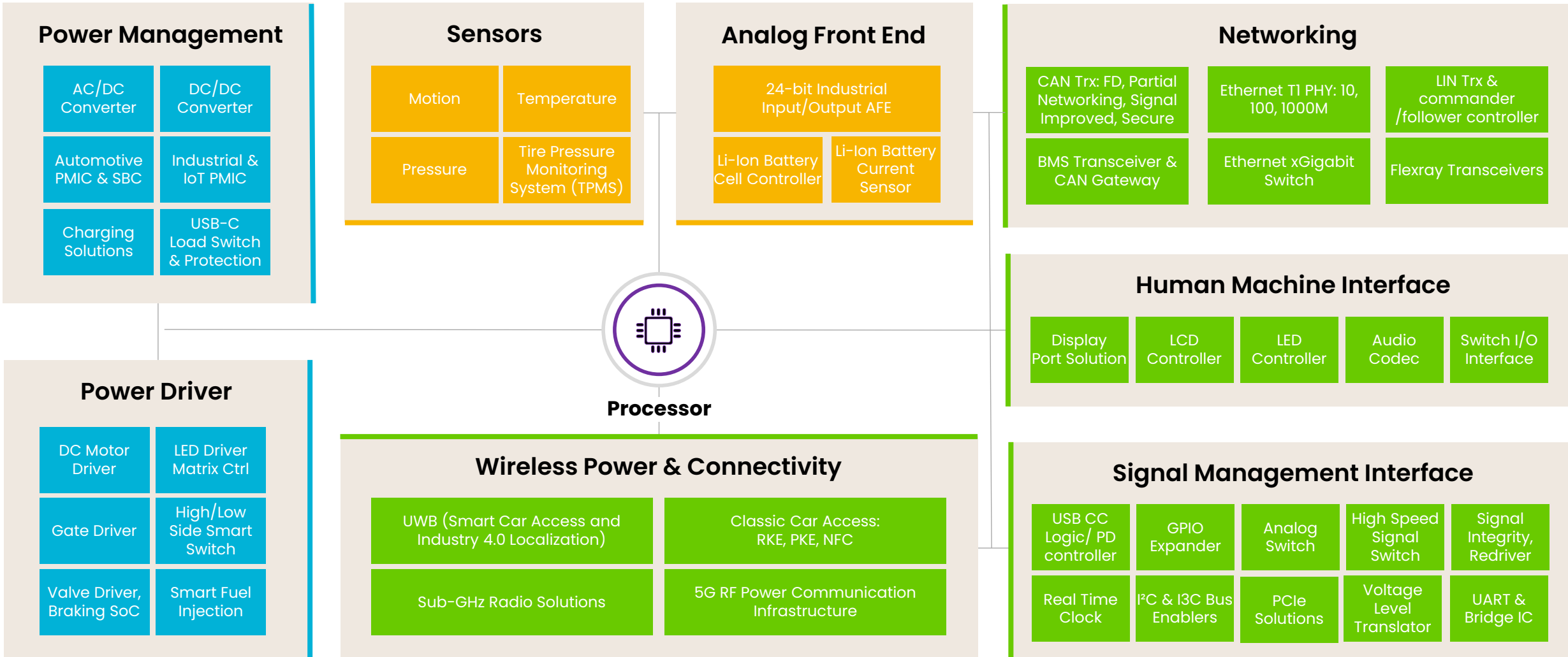
Industrial & IoT



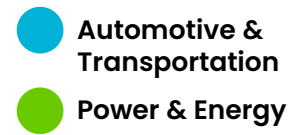
Mobile



Comm. Infra



FRDM Expansion Boards Index



Segment	Sub-segment	Device	Board	Link to the slide	Target Application
Power Network	Motor Driver	HB2002 SPI-Programmable H-Bridge Brushed DC Motor Driver	FRDM-HB2002ESEVM	Link	
	Motor Driver	MC33926 H-Bridge, Brushed DC Motor Driver	FRDM33926PNBEVM	Link	
	PMIC	PCA9420 Low-Power PMIC	PCA9420UK-EVM	Link	
	PMIC	PCA9421 Low-Power PMIC	PCA9421UK-EVM	Link	
Data Network	GPIO Expander	PCAL6416A Low-Voltage Translating 16-Bit I ² C-Bus/SMBus I/O Expander	PCAL6416AEV-ARD	Link	
	GPIO Expander	PCAL9722 22-Bit SPI I/O Expander with Agile I/O Features	PCAL9722HN-ARD	Link	
	I ² C-Bus Switch	PCA9846 Four-Channel Ultra-Low Voltage, Fm+ I ² C-Bus Switch with Reset	PCA9846PW-ARD	Link	
	I ³ C-Bus Switch & VLT	P3S0210BQ Dual Bidirectional I ³ C 1:2 Switch and VLT	P3S0210BQ-ARD	Link	
	LIN Transceiver	SJA1124 Quad LIN Commander Transceiver with LIN Commander Controller	SJA1124EVB	Link	
	LED Controller	PCA9957 24-Channel SPI Serial Bus 32 mA/5.5 V Constant-Current LED Driver	PCA9957HN-ARD	Link	
	LED Controller	PCA9959 24-Channel SPI Serial Bus 63 mA/5.5 V Constant Current LED Driver	PCA9959HN-ARD	Link	
	Real Time Clock	PCF2131 Accurate RTC with Integrated TCXO for Industrial Applications PCA2131 Accurate RTC with Integrated TCXO for Automotive Applications	PCF2131-ARD	Link	
	Real Time Clock	PCF85063A Tiny Real-Time Clock/Calendar with Alarm Function and I ² C-Bus	PCF85063AT-ARD	Link	

FRDM Expansion Boards Index

Segment	Sub-segment	Device	Board	Link to the slide	Target Application
Precision Analog	Magnetic Sensor	NMH1000 Ultra-Low Power and Low-Voltage Magnetic Switch	FRDMSTBI-NMH1000	Link	
	Motion Sensor	FXLS8974CF ±2g/±4g/±8g/±16g, Low-Power 12-Bit Digital IoT Accelerometer	FRDM-STBI-A8974	Link	
	Motion Sensor	FXLS8971CF ±2g/±4g/±8g/±16g, Low Power 12-Bit Digital Accelerometer	FRDM-STBI-A8971	Link	
	Pressure Sensor	MPL3115 Absolute Digital Pressure Sensor (20 to 110 kPa)	FRDMSTBC-P3115	Link	
	Temperature Sensor	P3T1085UK I3C/I ² C-Bus ±0.5 °C Accurate Digital Temperature Sensor	P3T1085UK-ARD	Link	
		P3T1084UK I3C/I ² C-Bus ±0.4 °C Accurate Digital Temperature Sensor			
Analog Front End	NAFE13388 8/4 Channel 24/16 bits ±25 V Universal Input Analog Front-End	NAFE13388-UIM	Link		

1

About Technical Support

If you have a question about NXP products, you can reach out NXP's Distributors or NXP sales, or NXP can support by online base too!



Support Tickets

Confidential assistance with NXP support professional

Click → [Submit a ticket](#)



Live Chat

How can we help?

Click → [Live Chat: Online Now](#)



NXP Community

Open forum for technical discussions moderated by NXP experts

Click → [Get answers](#)

2

About Product Longevity

- HERO+ are available for minimum of 10 years or 15 years since product launched date
- Extended periods may be available under certain circumstances
- About each product information, please check [Product Longevity](#) in NXP.com



Product **Longevity**

FRDM33926PNBEVM FRDM Kit for MC33926

H-Bridge Motor Driver

Enabling System Solutions with FRDM Platform

FRDM33926PNBEVM Highlights

Supported Device

[MC33926 H-bridge DC Motor Driver](#)

Target Applications

- Electronic throttle control (ETC)
- Exhaust gas recirculation (EGR)
- Turbo flap control
- Industrial and medical pumps and motor control

Key Features

- Test points to allow signal probing
- Built-in reverse battery protection
- Built-in voltage regulator to supply logic level circuitry
- LEDs to indicate the supply status and direction of motor
- Transient voltage suppressor to handle system level transients

Available Now



2.5" x 3.25" (6.35 cm x 8.25 cm)

Device	Compatible Processor Boards	SDK	ACH (Example Project)
MC33926	FRDM-MCXA153 FRDM-MCXN947	MC33926 Driver	MC33926 Driver

Documents:

[FRDM33926PNBEVM User Guide](#)

For pricing and availability, see the [FRDM33926PNBEVM](#) FRDM Expansion Board page.

FRDM-HB2002ESEVM FRDM Kit for HB2002, Programmable Brushed DC Motor Control

Enabling System Solutions with FRDM Platform

FRDM-HB2002ESEVM Highlights

Supported Device

[HB2002 H-Bridge DC Motor Driver](#)

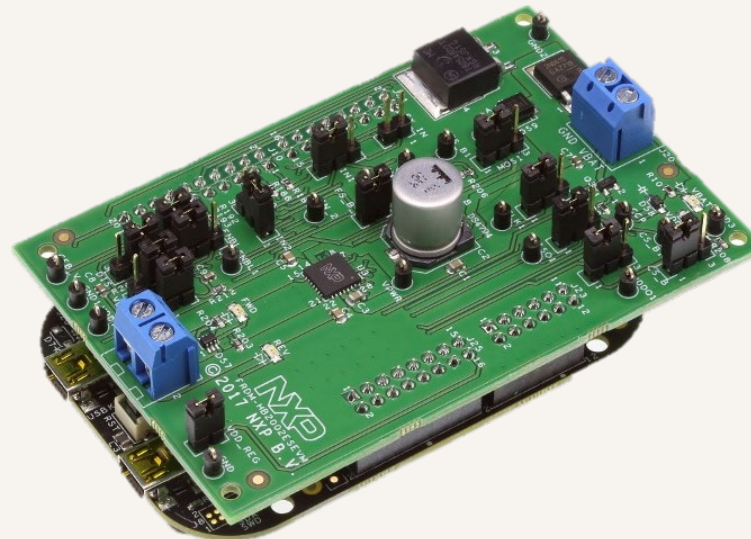
Target Applications

- Electronic throttle control
- Exhaust gas recirculation control (EGR)
- Turbo, swirl and whirl and waste flap control
- Electric pumps, motor control and auxiliaries

Key Features

- Current feedback network for real-time load current monitoring by MCU ADC
- LEDs to indicate the supply status and the direction of the motor
- Low ESR capacitor to reduce ripple in the power supply
- TVS protection diode to handle system level transients

Available Now



2.5" x 3.2" (6.35 x 8.12 cm)

Device	Compatible Processor Boards	SDK	ACH (Example Project)
HB2002	FRDM-MCXA153 FRDM-MCXN947	HB2002 Driver	HB2002 Driver

Documents:

[UM11144 FRDM-HB2002ESEVM evaluation board - User Guide](#)

For pricing and availability, see the [FRDM-HB2002ESEVM Development Board](#) page.

PCA9420UK-EVM FRDM Expansion Board

Enabling System Solutions with FRDM Platform

PCA9420-EVB Highlights

Supported Device

[PCA9420-PCA9421 PMIC for Low Power Applications](#)

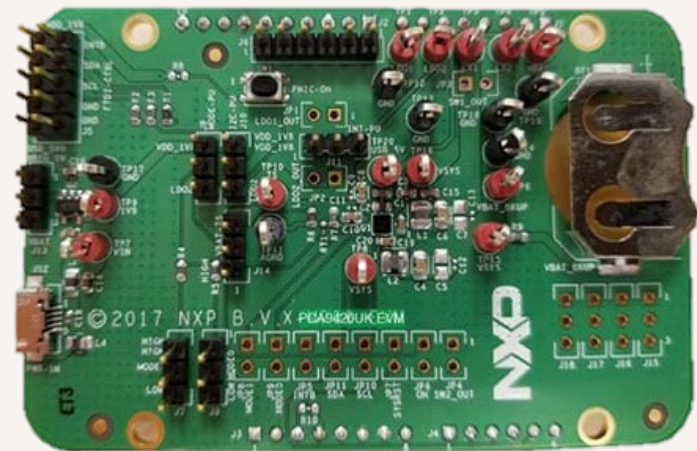
Target Applications

- Hearing Aids and Cochlear Implants
- Low-Power Microcontroller Application
- Vital Signs Monitors
- Audio Subsystems, hearables and smart watch

Key Features

- Targeted to provide a full power management solution for low power microcontroller applications.
- It has I²C programmable Constant Current (CC) and Constant Voltage (CV) values for flexible configuration.
- It also features JEITA compliant charging
- The device integrates two step-down (buck) DC/DC converters which have I²C programmable output voltage.
- Other protection features such as overcurrent protection, under-voltage lockout (UVLO), etc. are also provided

Available Now



3.2" x 2.1" (8.12 x 5.33 cm)

Device	Compatible Processor Boards	SDK	ACH (Example Project)
PCA9420-PCA9421	FRDM-MCXA153 FRDM-MCXN947	In Development	In Development

Documents:

[UM11216, PCA9420UK-EVM Evaluation Board User Manual](#)

For pricing and availability, see the [PCA9420UK-EVB](#) FRDM Expansion Board page.

PCA9421UK-EVM FRDM Expansion Board

Enabling System Solutions with FRDM Platform

PCA9421UK-EVM Highlights

Supported Device

[PCA9421 PMIC for Low Power Applications](#)

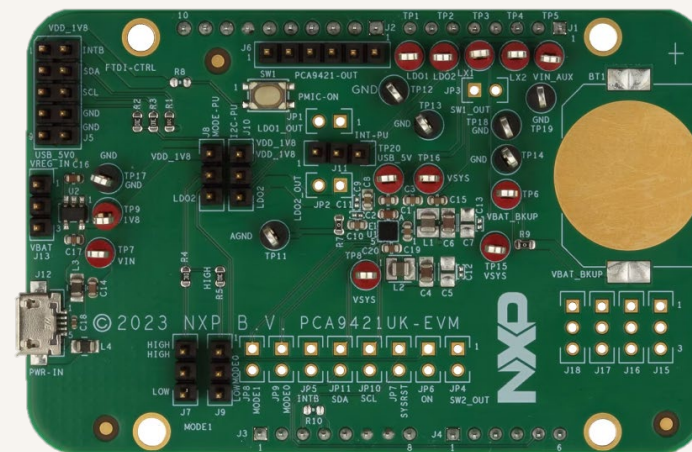
Target Applications

- High-Voltage Battery Management Systems (> 800 V)
- Data Buses and Battery Management

Key Features

- Two step-down DC-DC converters
- Very low quiescent current
- Programmable output voltage regulation
- -40 °C to +85 °C ambient temperature range
- Offered in 5 x 5 bump-array WLCSP and 24-pin QFN package

Available Now



3.2" x 2.1" (8.12 x 5.33 cm)

Device	Compatible Processor Boards	SDK	ACH (Example Project)
PCA9421	MCXN9EVK	In Development	In Development

Documents:

[UM11987, PCA9421UK-EVM Evaluation Board User Manual](#)

For pricing and availability, see the [PCA9421UK-EVM](#) FRDM Expansion Board page.

PCAL6416AEV-ARD Arduino® Shield Evaluation Board for PCAL6416A 16-bit GPIO

Enabling System Solutions with FRDM Platform

PCAL6416AEV-ARD Highlights

Supported Device

[PCAL6416A Low-Voltage I²C-Bus/SMBus I/O Expander](#)

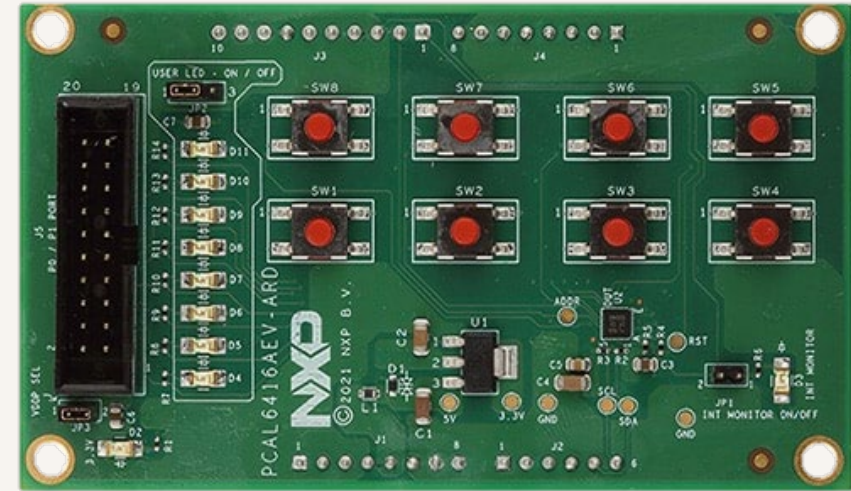
Target Applications

- I/O Voltage Translating
- Keypad
- Push Buttons
- Home Sensor

Key Features

- I/O connector for external access to IC input-output pins
- 8 user switches connected to I/O pins of the IC
- 8 user LEDs connected to I/O pins of the IC
- Equipped with Arduino Uno R3 port for direct connection with Arduino devices
- Fully compliant with IMXRT1050, LPCXpresso55S69 and i.MX Mini LPDDR4 EVK boards, including GUI (Windows 10)

Available Now



3.7" x 2.16" (9.39 x 5.48 cm)

Device	Compatible Processor Boards	SDK	ACH (Example Project)
PCAL6416A	FRDM-MCXA153 FRDM-MCXN947	Planned	Planned

Documents:

[UM11704, PCAL6416AEV-ARD Evaluation Board - User Manual](#)
[UM11581 - Arduino Shields GUI and Firmware Installation - User Guide](#)

For pricing and availability, see the [PCAL6416AEV-ARD Development Board](#) page.

PCAL9722HN-ARD PCAL9722 Ultra Low-Voltage Translating 22-Bit SPI I/O Evaluation Board

Enabling System Solutions with FRDM Platform

Available Now

PCAL9722HN-ARD Highlights

Supported Device

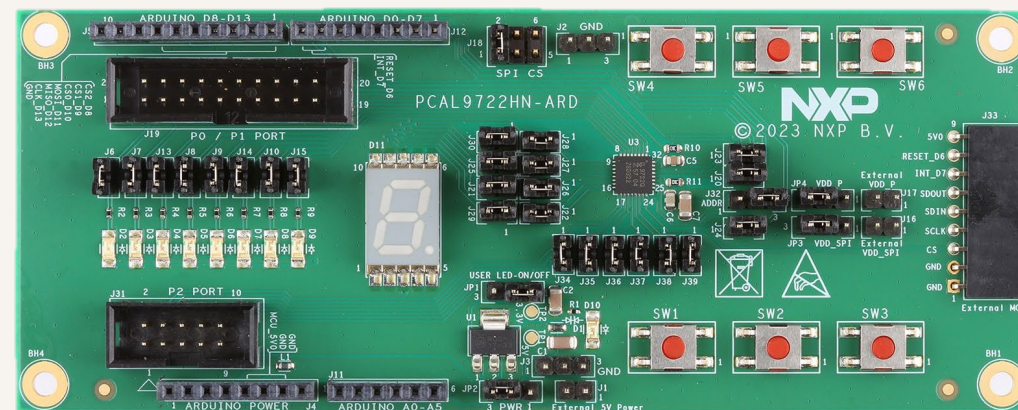
[PCAL9722 Ultra low-voltage 22-Bit SPI I/O Expander](#)

Target Applications

- Battery-Powered Mobile
- Keypad

Key Features

- A complete evaluation platform for the PCAL9722HN with Agile I/O features, interrupt output and reset
- Convenient test points for easy scope measurements and signal access
- Easy to use GUI based software demonstrates the capabilities of the PCAL9722HN
- On-board LEDs, 7 segment display and key switches for PCAL9722HN general purpose I/O evaluation.



5.75" x 2.25" (14.6 x 5.7 cm)

Device	Compatible Processor Boards	SDK	ACH (Example Project)
PCAL9722	FRDM-MCXA153 FRDM-MCXN947	Planned	Planned

Documents:

[UM12075, PCAL9722HN-ARD Evaluation Board User Manual](#)

For pricing and availability, see the [PCAL9722HN-ARD](#) Development Board page.

PCA9957HN-ARD FRDM Expansion Board (Arduino® Shield) for PCA9957 LED Driver

Enabling System Solutions with FRDM Platform

PCA9957HN-ARD Highlights

Supported Device

[PCA9957 24-Channel SPI Serial Bus LED Driver](#)

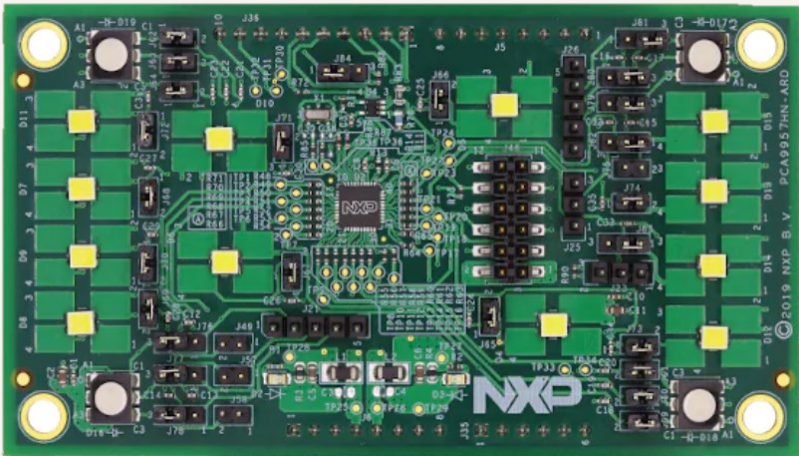
Target Applications

- LED displays / LED status information / LCD backlights
- RGB or RGBA LED drivers
- Keyboard or keypad backlights
- Smart Assistance Response LED lighting
- Fade-in and fade-out for breathlight control

Key Features

- Use Arduino connector for data and power
- Multiple board connection in stack architecture
- On-board connectors for external LEDs
- Fully compliant with IMXRT1050 EVK board, including GUI (Windows 10)

Available Now



4.0" x 2.4" (10.16 x 6.09 cm)

Device	Compatible Processor Boards	SDK	ACH (Example Project)
PCA9957	FRDM-MCXA153 FRDM-MCXN947	PCA9957HN-ARD Driver	PCA9957HN-ARD Driver

Documents:
[UM11579, PCA9957HN-ARD User Manual](#)
[UM11581, GUI User Manual](#)

For pricing and availability, see the [PCA9957HN-ARD](#) FRDM Expansion Board page.

PCA9959HN-ARD Arduino® Shield Evaluation Board for PCA9959 LED Driver

Enabling System Solutions with FRDM Platform

Available Now

PCA9959HN-ARD Highlights

Supported Device

[PCA9959 24-Channel SPI Serial Bus LED Driver](#)

Target Applications

- Keypad backlights
- LED displays
- RGB or RGBA LED drivers
- Smart Assistance Response LED lighting

Key Features

- Combined Arduino port/Fuji connector for data and power
- Onboard LEDs for all 24 outputs of the DUT IC
- Onboard jumpers for LED connection, and short tests
- Onboard connectors for external LEDs
- Compliant with IMXRT1050 , LPCXpresso55S69 , 8MMINILPD4-EVK boards, including GUI for Windows 10



3.2" x 2.3" (8.12 x 5.84 cm)

Device	Compatible Processor Boards	SDK	ACH (Example Project)
PCA9959	FRDM-MCXA153 FRDM-MCXN947	PCA9959HN-ARD SDK	PCA9959HN-ARD ACH

Documents:

[UM11623, PCA9959HN-ARD evaluation board - User manual](#)
[UM11581 - Arduino Shields GUI and Firmware Installation - User Guide](#)

For pricing and availability, see the [PCA9959HN-ARD Development Board](#) page.

PCA9846PW-ARD Arduino® Shield board for PCA9846 Ultra-low voltage, I²C-Bus Switch

Enabling System Solutions with FRDM Platform

PCA9846PW-ARD Highlights

Supported Device

[PCA9846 Four-Channel Ultra-Low Voltage I²C-Bus Switch](#)

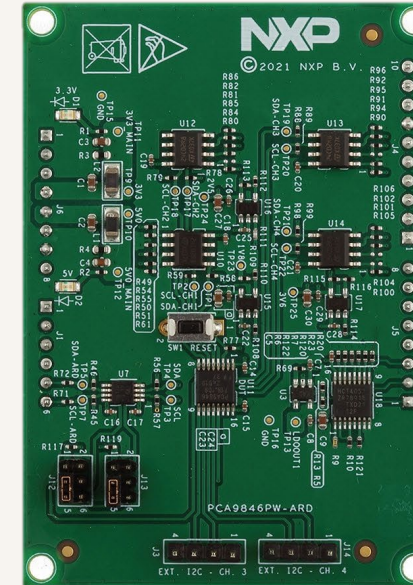
Target Applications

- I²C Bus Multiplexer
- I²C Bus Voltage Level Translator

Key Features

- Onboard I²C-bus external connector (channel 3 and 4)
- Equipped with four I²C EEPROMs for rapid test and measurements
- Equipped with programmable power supply for logic level combination
- Equipped with Arduino Uno R3 port for direct connection with Arduino devices
- Compliant with IMXRT1050, LPCXpresso55S69 and i.MX Mini LPDDR4 boards, including GUI (Windows 10)

Available Now



3.3" x 2.3" (8.38 x 5.84 cm)

Device	Compatible Processor Boards	SDK	ACH (Example Project)
PCA9846	FRDM-MCXA153 FRDM-MCXN947	Planned	Planned

Documents:

[UM11759, PCA9846PW-ARD Evaluation Board User Manual](#)

For pricing and availability, see the [PCA9846PW-ARD Development Board](#) page.

P3S0210BQ-ARD Dual Bidirectional I3C Switch and Voltage Level Translator Evaluation Board

Enabling System Solutions with FRDM Platform

Available Now

P3S0210BQ-ARD Highlights

Supported Device

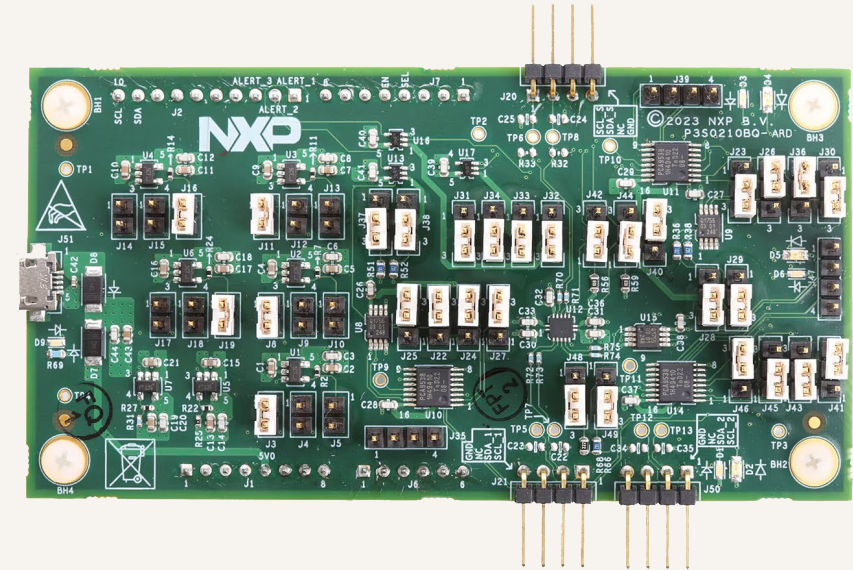
[P3S0210BQ Dual Bidirectional I3C 1:2 Switch and VLT](#)

Target Applications

- Smart Phone and Mobile Devices
- Networking, server and data center
- Desktop and Laptop Computers

Key Features

- Evaluation board is USB powered so external power supply is not required.
- Evaluation board can be connected to a standard NXP microcontroller board via Arduino interface headers.
- Off the board I²C and I3C target devices can be conveniently connected to the P3S0210 via on-board headers.



4.2" x 2.2" (10.6 x 5.58 cm)

Device	Compatible Processor Boards	SDK	ACH (Example Project)
P3S0210BQ	FRDM-MCXA153 FRDM-MCXN947	Planned	Planned

Documents:

[UM11909 P3S0210BQ-ARD User Manual](#)

For pricing and availability, see the [P3S0210BQ-ARD Development Board](#) page.

PCF2131-ARD FRDM Expansion Board (Arduino® Shield) for PCF2131/PCA2131 Real Time Clock

Enabling System Solutions with FRDM Platform

PCF2131-ARD Highlights

Supported Devices

[PCF2131 Accurate RTC for Industrial Applications](#)

[PCA2131 Accurate RTC for Automotive Applications](#)

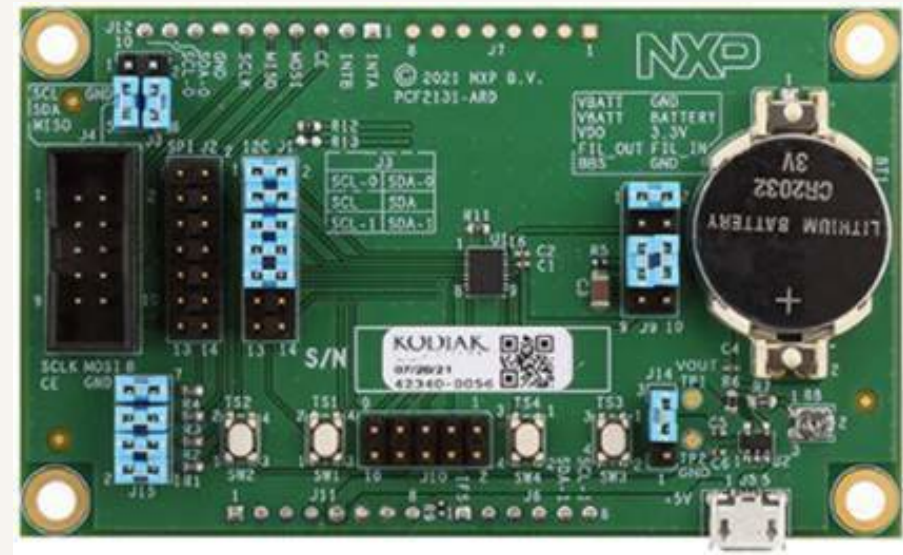
Target Applications

- Electronic metering for electricity, water, and gas
- GPS equipment
- POS terminal
- Major home appliances

Key Features

- On-board header for direct connection to Aardvark I²C/SPI Host Adapter
- Adjustable power supply for complex tests and verification
- On-board battery holder for battery switch-over circuit test
- On-board jumpers for I²C-bus or SPI-bus selection
- On-board connector and switches for timestamp function tests
- Fully compliant with IMXRT1050, LPCXpresso55S69 and i.MX Mini LPDDR4 EVK boards including GUI (Windows 10)

Available Now



3.5" x 2.0" (8.89 x 5.08 cm)

Device	Compatible Processor Boards	SDK	ACH (Example Project)
PCF2131 PCA2131	FRDM-MCXA153 FRDM-MCXN947	PCF2131 Driver	PCF2131 Driver

Documents:

[UM11597, PCF2131-ARD User Manual](#)

[UM11581, Arduino Shields GUI and firmware installation](#)

For pricing and availability, see the [PCF2131-ARD FRDM Expansion Board](#) page.

PCF85063AT-ARD Arduino® Shield board for PCF85063A Tiny Real-Time Clock

Enabling System Solutions with FRDM Platform

PCF85063AT-ARD Highlights

Supported Device

[PCF85063A Tiny Real-Time Clock/Calendar](#)

Target Applications

- Digital still camera and video camera
- Printers and copy machines
- Mobile equipment
- Battery powered devices

Key Features

- Connector for external access to I²C-bus
- Onboard user switch for oscillator stop test
- Onboard LED for interrupt pin monitoring
- Equipped with Arduino Uno R3 port for direct connection with Arduino devices
- Fully compliant with [MIMXRT1050-EVK](#), [LPC55S69-EVK](#) and [8MMINILPD4-EVK](#), including GUI software control (Windows 10)

Available Now



2.15" x 2.17" (5.46 x 5.51 cm)

Device	Compatible Processor Boards	SDK	ACH (Example Project)
PCF85063A	FRDM-MCXA153 FRDM-MCXN947	PCF85063A Driver	PCF85063A Driver

Documents:

- [UM11578, PCF85063AT-ARD evaluation board - User guide](#)
- [UM11581 - Arduino Shields GUI and Firmware Installation - User Guide](#)

For pricing and availability, see the [PCF85063AT-ARD](#) FRDM Expansion Board page.

SJA1124EVB FRDM Expansion Board (Arduino® Shield) for Quad LIN commander SJA1124

Enabling System Solutions with FRDM Platform

SJA1124EVB Highlights

Supported Device

[SJA1124 Quad LIN Commander Transceiver](#)

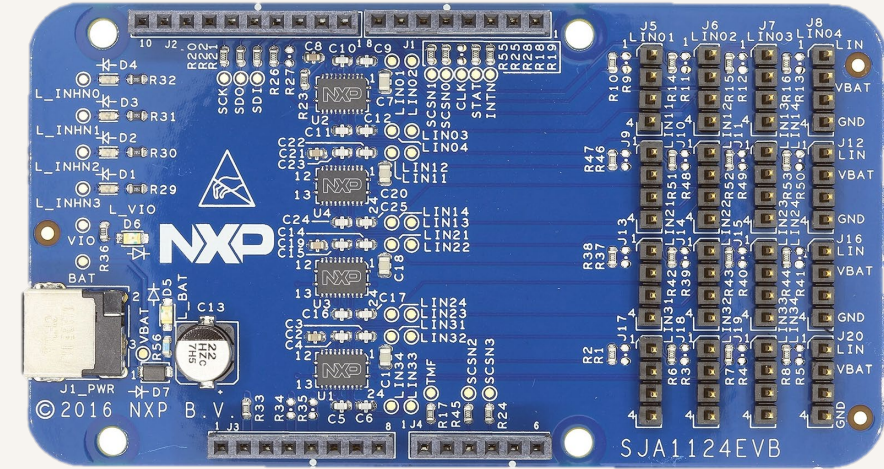
Target Applications

- Body control
- HVAC
- Ambient mood lighting
- Park assist

Key Features

- SJA1124 is a quad LIN commander IC that supports highly integrated multi-LIN communication.
- For easy LIN channel extension to the available microcontroller, this board features 16 LIN leader channels.
- The EVB is a hardware plug-in board (shield) with standards-based form factor compatible with Arduino® UNO pin layout.
- Power LED indicator, VIO LED indicator, INHN LED indicators

Available Now



3.90" x 2.10" (9.9 x 5.3 cm)

Device	Compatible Processor Boards	SDK	ACH (Example Project)
SJA1124	FRDM-MCXA153 FRDM-MCXN947	SJA1124 Driver	SJA1124 Driver

Documents:

- [SJA1124EVB User Guide](#)
- [SJA1124EVB Schematics](#)

For pricing and availability, see the [SJA1124EVB](#) FRDM Expansion Board page.

FRDMSTBC-P3115 Freedom Shield Evaluation Board for MPL3115 Pressure Sensor

Enabling System Solutions with FRDM Platform

FRDMSTBC-P3115 Highlights

Supported Device

[MPL3115 Absolute Digital Pressure Sensor \(20 to 110 kPa\)](#)

Target Applications

- High-accuracy altimetry and barometry
- Smartphones, tablets, and wearable devices
- GPS applications
- Weather station equipment

Key Features

- Compatible with Arduino® and most NXP® Freedom development boards
- Enables detailed sensor evaluation and development using the Sensor Toolbox – CE software
- Allows Register level analysis, computation of key sensor parameters like Current Consumption, debugging communication protocols like I²C and SPI, data logging etc.

Available Now



2.1" x 2.3" (5.3 x 5.84 cm)

Device	Compatible Processor Boards	SDK	ACH (Example Project)
MPL3115	FRDM-KL27Z FRDM-MCXA153 FRDM-MCXN947	MPL3115 Driver	MPL3115 Driver

Documents:

[FRDMSTBC-P3115 Quick Start Guide](#)

For pricing and availability, see the [FRDMSTBC-P3115 Sensor Toolbox Development Platform](#) page.

FRDM-STBI-A8974 Freedom Shield Evaluation Board for FXLS8974 Digital IoT Accelerometer

Enabling System Solutions with FRDM Platform

FRDM-STBI-A8974 Highlights

Supported Device

[FXLS8974CF Low-Power 12-Bit Digital IoT Accelerometer](#)

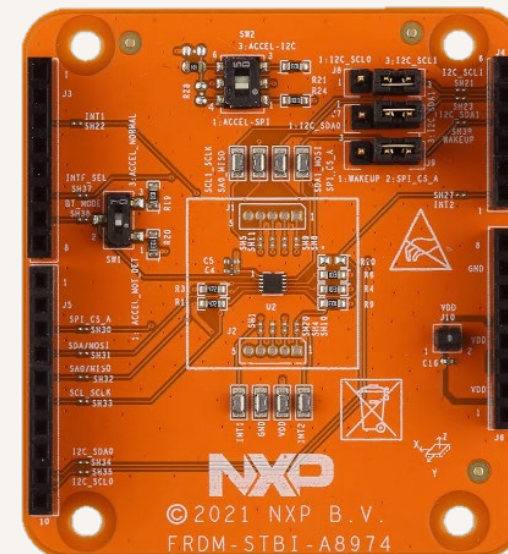
Target Applications

- Asset tracking and equipment monitoring
- Smart metering / tamper detection
- Patient activity monitors and other medical appliances
- Smart home and mobile consumer devices

Key Features

- Compatible with Arduino® and most NXP Freedom development boards
- Supports I²C and SPI communication interface with host MCU
- Supports hardware configurability to switch accelerometer mode and I²C/SPI interface mode

Available Now



2.1" x 2.3" (5.3 x 5.84 cm)

Device	Compatible Processor Boards	SDK	ACH (Example Project)
FXLS8974CF	FRDM-MCXA153 FRDM-MCXN947 FRDM-K22F	FRDM-K22F-A8974 LPCXpresso55S16-A8974	FXLS897xCF ACH Project

Documents:

[UM11736, FRDM-STBI-A8974 User Manual](#)

For pricing and availability, see the [FRDM-STBI-A8974](#) Sensor Toolbox Development Platform page.

FRDMSTBI-NMH1000 Freedom Shield Evaluation Board for NMH1000 Magnetic Switch

Enabling System Solutions with FRDM Platform

FRDMSTBI-NMH1000 Highlights

Supported Device

[NMH1000 Ultra-Low Power and Low-Voltage Magnetic Switch](#)

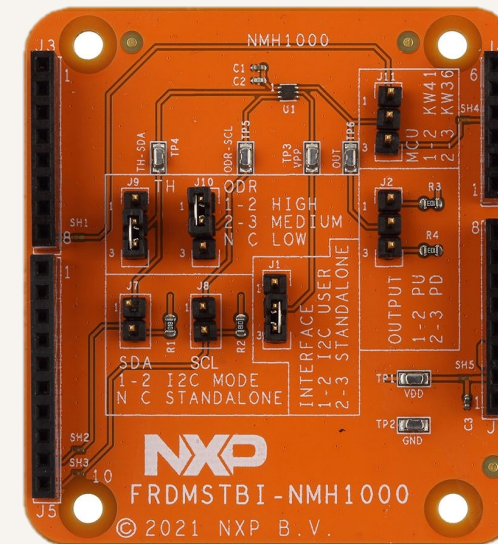
Target Applications

- Electronic system wake-up
- Tamper detection
- Laptop lid open / closed
- Door or window open / closed

Key Features

- Compatible with Arduino® and most NXP® Freedom development boards
- The FRDMSTBI-NMH1000 can be paired with NXP MCU boards of your choice

Available Now



2.1" x 2.3" (5.3 x 5.84 cm)

Device	Compatible Processor Boards	SDK	ACH (Example Project)
NMH1000	FRDM-KE15Z FRDM-MCXA153 FRDM-MCXN947	FRDMKE15-NMH1000	NMH1000 ACH Project

Documents:

[UM11835, FRDMSTBI-NMH1000 User Manual](#)

For pricing and availability, see the [FRDMSTBI-NMH1000](#) Freedom Shield Evaluation Board page.

FRDM-STBI-A8971 Freedom Shield Evaluation Board for FXLS8971 Digital Accelerometer

Enabling System Solutions with FRDM Platform

FRDM-STBI-A8971 Highlights

Supported Device

[FXLS8971CF Low Power 12-Bit Digital Accelerometer](#)

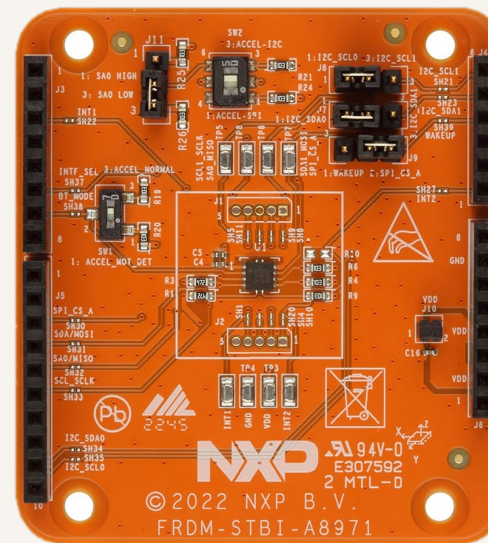
Target Applications

- Precision Inclinometer, Tilt Sensing
- Camera Stabilization
- Remote Patient Monitoring
- Equipment Monitoring and Asset Tracking

Key Features

- Compatible with Arduino® and most NXP Freedom development boards
- Supports I²C and SPI communication interface with host MCU
- Supports hardware configurability to switch accelerometer mode and I²C/SPI interface mode
- Support multiple test points on the board

Available Now



2.1" x 2.3" (5.3 x 5.84 cm)

Device	Compatible Processor Boards	SDK	ACH (Example Project)
FXLS8971CF	FRDM-MCXA153 FRDM-MCXN947	LPCXPRESSO55S16-A8971	FXLS897xCF ACH Project

Documents:

[UM11910, FRDM-STBI-A8971 User Manual](#)

P3T1085UK-ARD FRDM Expansion Board (Arduino® Shield) for P3T1085/P3T1084 Temperature Sensor

Enabling System Solutions with FRDM Platform

P3T1085UK-ARD Highlights

Supported Devices

- [P3T1085UK I3C/I²C-Bus Accurate Digital Temperature Sensor](#)
- [P3T1084UK I3C/I²C-Bus Accurate Digital Temperature Sensor](#)

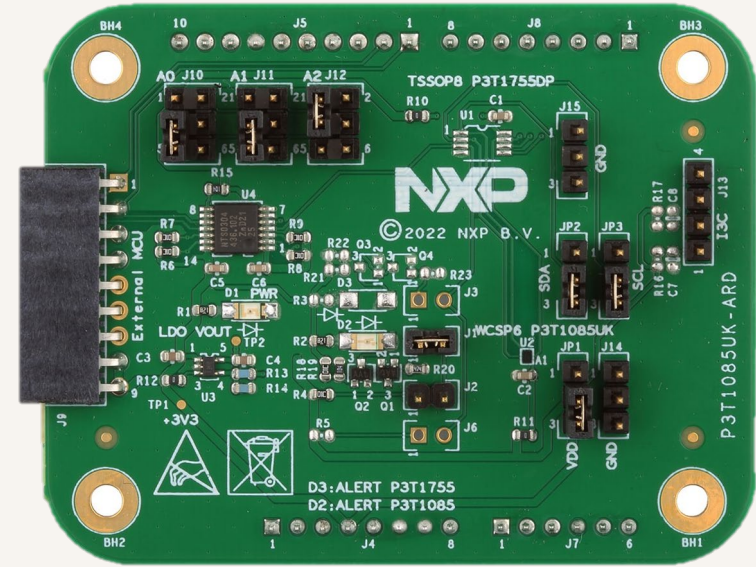
Target Applications

- Portable devices
- System thermal management
- Industrial controllers
- PC/Notebook/Servers/SSD

Key Features

- Use Arduino connector for data and power
- Easy to use GUI based software demonstrates the capabilities of the P3T1085UK/P3T1084UK
- On-board temperature sensor for system thermal management experiments
- Convenient test points for easy scope measurements and signal access

Available Now



3.0" x 2.4" (7.62 x 6.0 cm)

Device	Compatible Processor Boards	SDK	ACH (Example Project)
P3T1085UK P3T1084UK	FRDM-MCXA153 FRDM-MCXN947	P3T1085 Driver	P3T1085 ACH

Documents:

[UM11766, P3T1085UK-ARD User Manual](#)

For pricing and availability, see the [P3T1085UK-ARD FRDM Expansion Board](#) page.

NAFE13388-UIM 8 -Channel Universal Input AFE Arduino Shield Board (In Development)

Enabling System Solutions with FRDM Platform

NAFE13388-UIM Highlights

Supported Device

[NAFEx3388 Highly Configurable 8/4 Channel 24/16 bits \$\pm\$ 25 V Universal Input Analog Front-End](#)

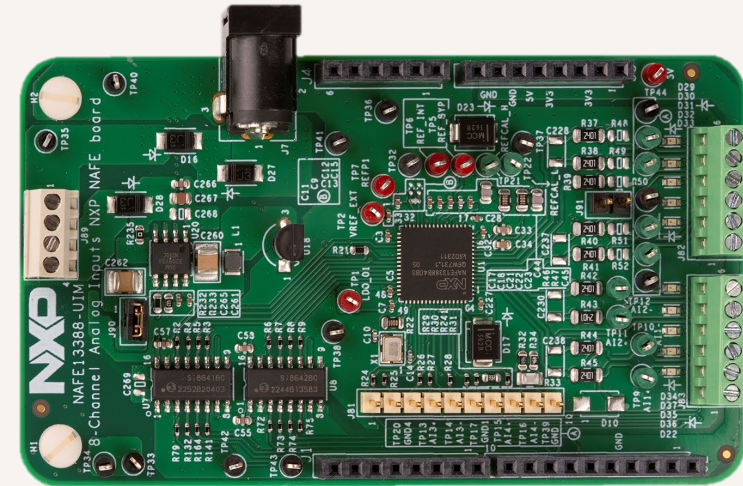
Target Applications

- PLC or remote I/O
- Data Acquisition
- Industrial Instruments
- Servo Control

Key Features

- Compact Design
- Arduino UNO connector connects to any NXP FRDM MCU platform
- FRDM compatible

Available Now



3.5" x 1.96" (8.9 x 5 cm)

Device	Compatible Processor Boards	SDK	ACH (Example Project)
NAFEx3388	FRDM-MCXN947	NAFE13388 Driver	NAFE13388 Driver

Documents:
[In Development](#)

For pricing and availability, see the [NAFE13388-UIM FRDM Expansion Board](#) page.

Completed and Available Drivers

Summary Released FRDM Expansion Boards

 Automotive & Transportation














 Power & Energy

 Factory Automation

 Home & Building Controls

 Healthcare

 Communication & Computing

Segment	Device	Board(s)	Driver	ACH (Example Project)	Target Application	
Real Time Clock	PCF2131 Accurate RTC with Integrated TCXO for Industrial Applications PCA2131 Accurate RTC with Integrated TCXO for Automotive Applications	PCF2131-ARD	FRDM-MCXA153 MCXN947	PCF2131 Driver	PCF2131 Driver	
	PCF85063A Real Time Clock	PCF85063AT-ARD	FRDM-MCXA153 MCXN947	PCF85063A Driver	PCF85063A Driver	
Temperature Sensor	P3TI085 I3C/I2C-Bus Temperature Sensor with ±0.5 °C Accuracy	P3TI085UK-ARD	FRDM-MCXA153 MCXN947	P3TI085 Driver	P3TI085 Driver	
LED Controller	PCA9957 24-CH SPI LED Controller with 32 mA Constant Current Driver	PCA9957HN-ARD LED Driver 8 Click	FRDM-MCXA153 MCXN947	PCA9957 Driver	PCA9957 Driver	
	PCA9959 24-CH SPI LED Controller with 63 mA Constant Current Driver	PCA9959HN-ARD	FRDM-MCXA153 MCXN947	PCA9959 Driver	PCA9959 Driver	
I3C-Bus Hub	P3H244x 4-CH I3C-Bus Hub			In Development	In Development	
	P3H2840 8-CH I3C-Bus Hub			In Development	In Development	
Analog Front End	NAFE13388 Analog Front End	NAFE13388-UIM	FRDM-MCXN947	NAFE13388 Driver	NAFE13388 Driver	
Motion Sensor	FXLS8974CF 3-Axis Low-g Accelerometer	FRDM-STBI-A8974 Accel 4 Click	FRDM-K22F FRDM-MCXA153 MCXN947 FRDM-MCXA153 MCXN947	FRDM-K22F-A8974 LPCXpresso55S16-A8974	FXLS897xCF ACH Project	
	FXLS8971CF 3-Axis Low-g Accelerometer with Improved TCO Performance	FRDM-STBI-A8971	FRDM-MCXA153 MCXN947	LPCXPRESSO55S16-A8971		
Pressure Sensor	MPL3115 Precision Pressure Sensor with Altimetry	FRDMSTBC-P3115 Altitude Click	FRDM-KL27Z FRDM-MCXA153 MCXN947 FRDM-MCXA153 MCXN947	FRDMKL27-P3115	MPL3115 ACH Project	
Magnetic Sensor	NMH1000 Magnetic Switch	FRDMSTBI-NMH1000 Hall Switch 3 click	FRDM-KE15Z FRDM-MCXA153 MCXN947 FRDM-MCXA153 MCXN947	FRDMKE15-NMH1000	NMH1000 ACH Project	
Motor Driver	MC33926 H-Bridge Driver	FRDM33926PNBEVM	FRDM-MCXA153 MCXN947	MC33926 Driver	MC33926 Driver	
	HB2002 Brushed DC Motor Driver	FRDM-HB2002ESEVM	FRDM-MCXA153 MCXN947	HB2002 Driver	HB2002 Driver	
LIN Transceiver	SJA1124 SPI-to-Quad LIN Bridge	SJA1124EVB	FRDM-MCXA153 MCXN947	SJA1124 Driver	SJA1124 Driver	
PMIC	PCA9420 PMIC for Low-Power MCU Applications	PCA9420UK-EVM		In development	In development	
	PCA9421 PMIC for Low-Power MCU Applications	PCA9421UK-EVM				



[nxp.com](https://www.nxp.com)

| Public | NXP, and the NXP logo are trademarks of NXP B.V. All other product or service names are the property of their respective owners. © 2024 NXP B.V.