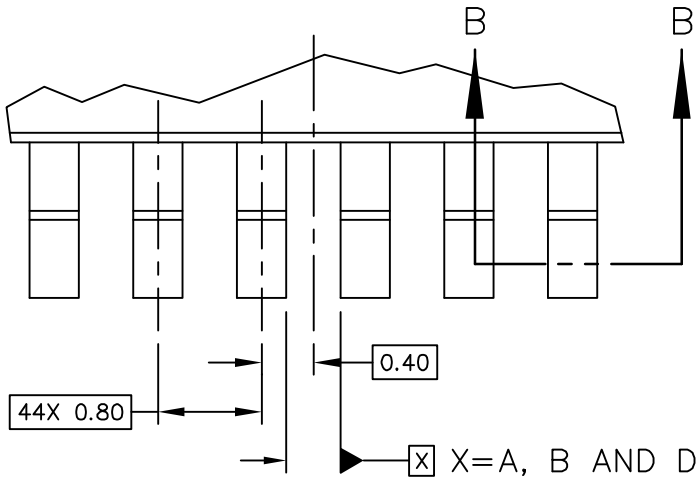
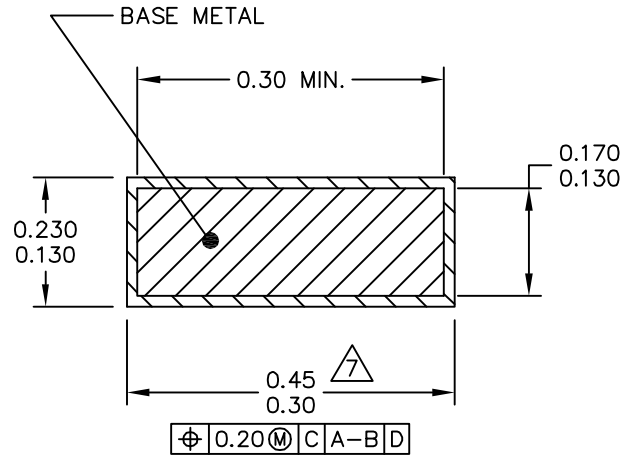


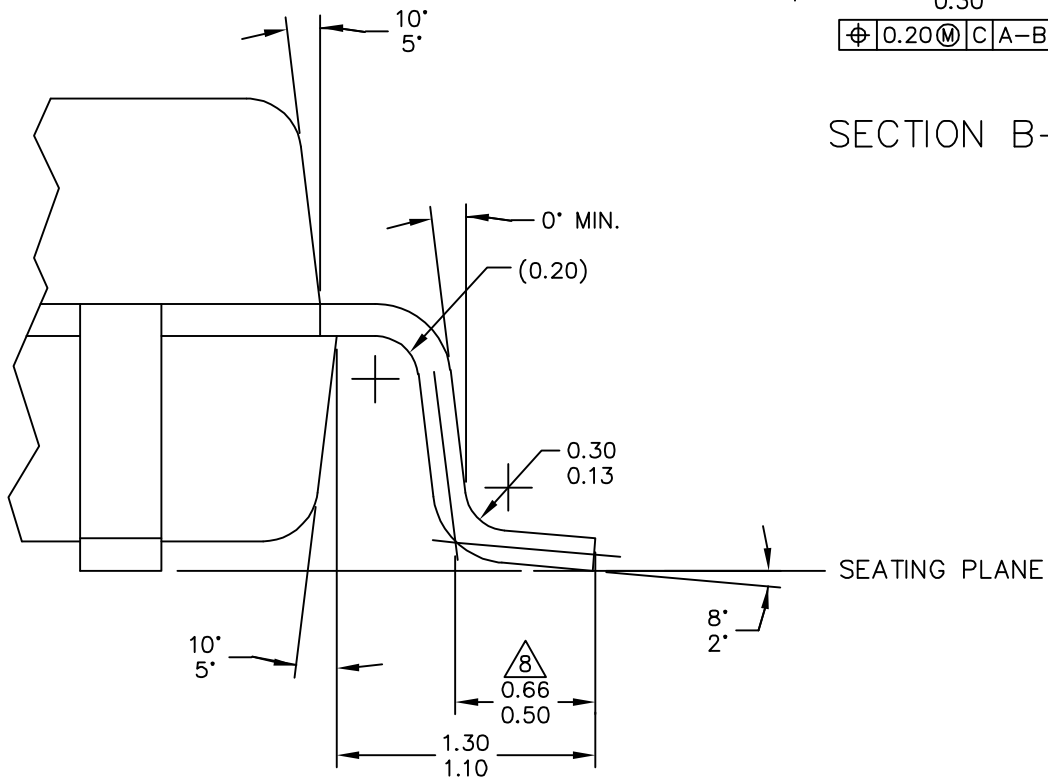
© NXP SEMICONDUCTORS N.V. ALL RIGHTS RESERVED	MECHANICAL OUTLINE	PRINT VERSION NOT TO SCALE
TITLE: QUAD FLAT PACK, 64 LEAD (14 X 14 PACKAGE)	DOCUMENT NO: 98ASB42845B	REV: G
	STANDARD: NON-JEDEC	
	SOT1697-2	19 JAN 2016



VIEW A



SECTION B-B



VIEW C

© NXP SEMICONDUCTORS N.V. ALL RIGHTS RESERVED	MECHANICAL OUTLINE	PRINT VERSION NOT TO SCALE
TITLE: QUAD FLAT PACK, 64 LEAD (14 X 14 PACKAGE)	DOCUMENT NO: 98ASB42845B	REV: G
	STANDARD: NON-JEDEC	
	SOT1697-2	19 JAN 2016



NOTES:

- 1 DIMENSIONING AND TOLERANCING PER ASME Y14.5M-1994.
- 2 CONTROLLING DIMENSION: MILLIMETER.
- 3 DATUM PLANE H IS LOCATED AT BOTTOM OF LEAD AND IS COINCIDENT WITH THE LEAD WHERE THE LEAD WIXITS THE PLASTIC BODY AT THE BOTTOM OF THE PARTING LINE.
- 4 DATUMS A, B AND D TO BE DETERMINED AT DATUM PLANE H.
- △ THIS DIMENSIONS TO BE DETERMINED AT SEATING PLANE C.
- △ THIS DIMENSIONS DOES NOT INCLUDE MOLD PROTRUSION. ALLOWABLE PROTRUSION IS 0.25 PER SIDE. DIMENSIONS A AND B DO INCLUDE MOLD MISMATCH AND ARE DETERMINED AT DATUM PLANE H.
- △ THIS DIMENSION DOES NOT INCLUDE DAMBAR PROTRUSION. DAMBAR PROTRUSION SHALL NOT CAUSE THE D DIMENSION TO EXCEED 0.53. DAMBAR CANNOT BE LOCATED ON THE LOWER RADIUS OR THE FOOT.
- △ THIS DIMENSION IS TO BE MEASURED FROM THE THEORETICAL INTERSECTION OF LEAD FOOT AND LEG CENTERLINES.

© NXP SEMICONDUCTORS N.V. ALL RIGHTS RESERVED	MECHANICAL OUTLINE	PRINT VERSION NOT TO SCALE
TITLE: QUAD FLAT PACK, 64 LEAD (14 X 14 PACKAGE)	DOCUMENT NO: 98ASB42845B	REV: G
	STANDARD: NON-JEDEC	
	SOT1697-2	19 JAN 2016