

## Motorola Semiconductor Engineering Bulletin

---

# EB370

### In-Circuit Programming of FLASH Memory Using the Monitor Mode for the MC68HC908MR16/32

By Timothy J. Airaudi  
Applications Engineering, Microcontroller Division  
Austin, Texas

#### Introduction

---

This engineering bulletin describes how to perform in-circuit programming (ICP) of the FLASH memory using monitor mode.

Two methods are discussed here:

- Using the M68ICS08MR in-circuit simulator (ICS) with P&E Microsystems software
- Using an external communications circuit with P&E Microsystems software

ICP is a process in which user code is programmed into the device's FLASH memory after the part has been assembled into the application. ICP also allows the original user code to be erased and re-programmed. This method can be used in development, production/manufacturing, and in a field environment.



## Using Monitor Mode for FLASH Programming

---

Motorola's current solution for ICP is the in-circuit simulators and P&E's software.

The software and ICS allow programming of the parts on the simulator or in the target circuit via a MON08 ribbon cable. The software also allows programming of the part, without the ICS, with an external communications circuit.

All of the programming described here is accomplished by placing the part into monitor mode. In this mode, erasing and programming are done through a single-wire interface with the host computer.

The two ways to enter monitor mode are:

- The ICS provides the entry requirements to enter standard monitor mode. These entry requirements must be implemented on the target board if the ICS is not used.
- A second way to enter monitor mode, that does not require a high voltage on the  $\overline{\text{IRQ}}$  pin, is forced monitor mode. This mode does not need to meet all the monitor mode entry conditions of the standard monitor mode, but it does require the part to be blank (erased).

This engineering bulletin describes how to connect the part, communicate at different baud rates, place it into monitor mode, pass security, and erase and program the part. If the security code is not known, the contents of the FLASH can't be read, but the FLASH can be erased and reprogrammed.

Information on the M68ICS08MR can be found at <http://mcu.motsps.com>. P&E Microsystems software can be downloaded free from that company's Web site.

**NOTE:** *All of the oscillators used in this engineering bulletin are the 4-pin "powered" or "canned" type oscillators. Discussing all the different vendors of crystals, ceramic oscillators, other required external components, and component layout variables would be too extensive.*

ICP Using  
the M68ICS08MR's  
MON08 Interface

Use this procedure for performing ICP using the ICS's MON08 cable to the target application.

1. Materials required:
  - a. PC with P&E software installed
  - b. M68ICS08MR simulator
  - c. Adapter/connector to connect the female end of the MON08 cable to the part on the target application
  - d. Pin assignment diagram (see [Figure 1](#) and [Figure 2](#))
  - e. Monitor mode entry requirements (see [Table 1](#))
  - f. Crystal oscillator on the target or from an external clock source with a value from [Table 2](#)
  - g. Target board must have the ability to perform a power-on reset (POR) not just a reset (required to enter monitor mode).
2. Connections (see [Figure 3](#)):
  - a. 5-pin serial cable from PC to the ICS
  - b. 5 volts to the ICS
  - c. MON08 cable from J7 of the ICS to the target board with these connections:
    - MON08 GND to the  $V_{SS}$  pin on the part
    - MON08 RST to the  $\overline{RST}$  pin on the part
    - MON08 IRQ to the  $\overline{IRQ}$  pin on the part
    - MON08 PTA0 to the PTA0 pin on the part
    - MON08 PTC2 to the PTC2 pin on the part
    - MON08 PTC3 to the PTC3 pin on the part
    - MON08 PTC4 to the PTC4 pin on the part
    - MON08 PTA7 to the PTA7 pin on the part
  - d. It is assumed that all  $V_{DD}$  and  $V_{SS}$  pins on the part are already connected.

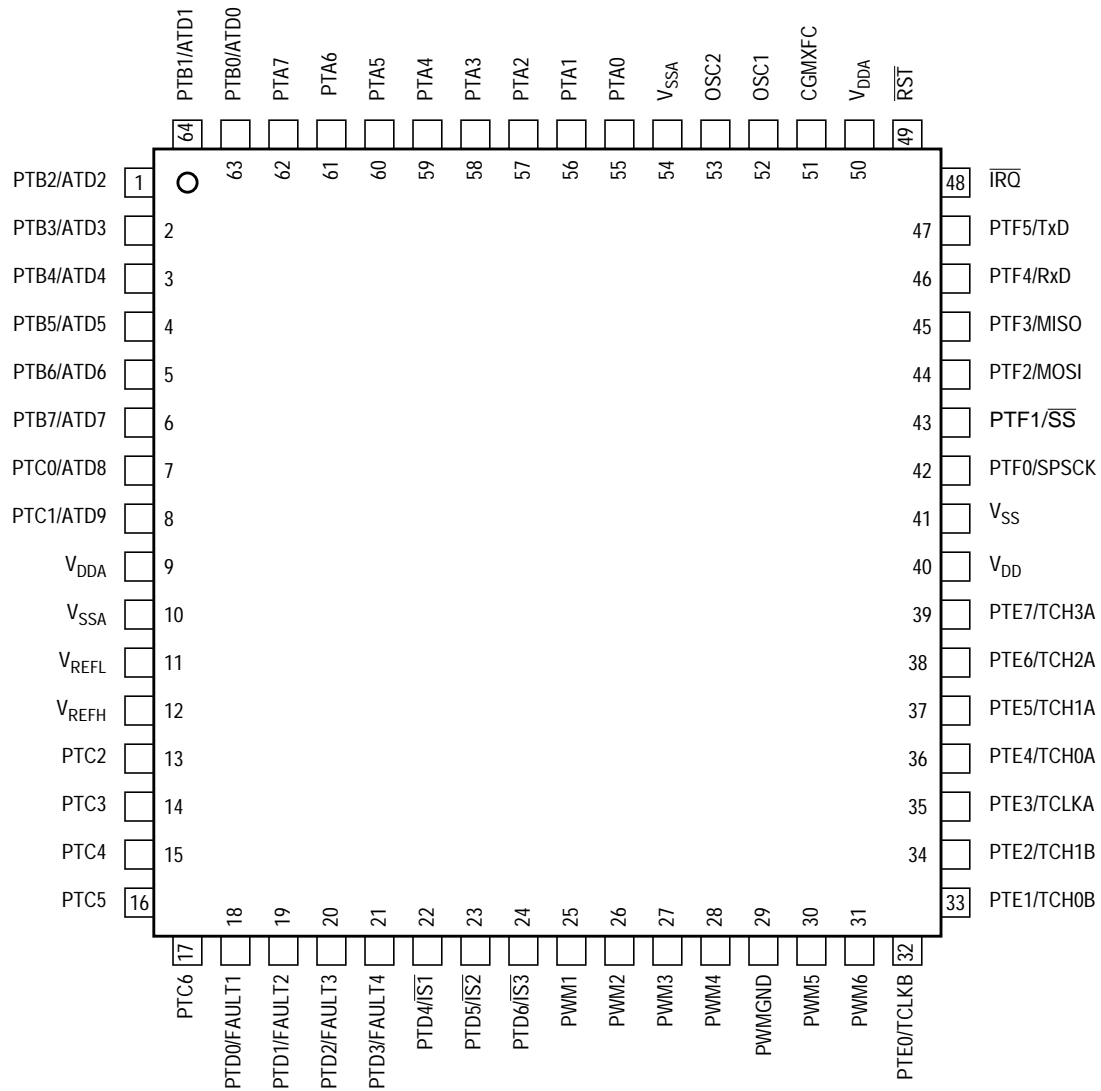
3. Operation — Standard monitor mode entry:
  - a. Launch P&E's WINIDE in the ICS08MRZ software.
  - b. Open desired file. (Demo file can be used.)
  - c. Assemble/Compile the file (see [Figure 6](#)).
  - d. Plug in power to the ICS.
  - e. Turn on power to the target.
  - f. Launch the programmer.
  - g. From "Target Hardware Type," select "Class II" (see [Figure 7](#)).
  - h. From "PC Serial Port Configuration," select the PC port you are using and the appropriate baud rate (see [Table 2](#)).
  - i. From "Target MCU Security Bytes," select appropriate security code (blank part = FF).
  - j. Select "Contact Target with these Settings..."
  - k. Follow the instructions in the "Power Down/Up Dialog" windows.
  - l. Select appropriate algorithm for the part being used. The high-speed algorithm will not work at 28,800 baud.
  - m. Double click on "Erase Module" – EM (see [Figure 8](#)).
  - n. Double click on "Program Module" – PM.
  - o. Record security bytes. This information can be seen by quitting and then re-entering the programmer. The S19 record will have the same security bytes as the part just programmed as long as it is not changed. The security bytes consist of the information stored in the interrupt vectors, \$FFF6–\$FFFD.
4. Operation — Forced monitor mode:
  - a. This mode of operation currently is not supported with this ICS. However, this mode can be entered by using the procedure found in [ICP Using the External Communications Circuit \(No ICS\)](#).

ICP Using  
the External  
Communications  
Circuit (No ICS)

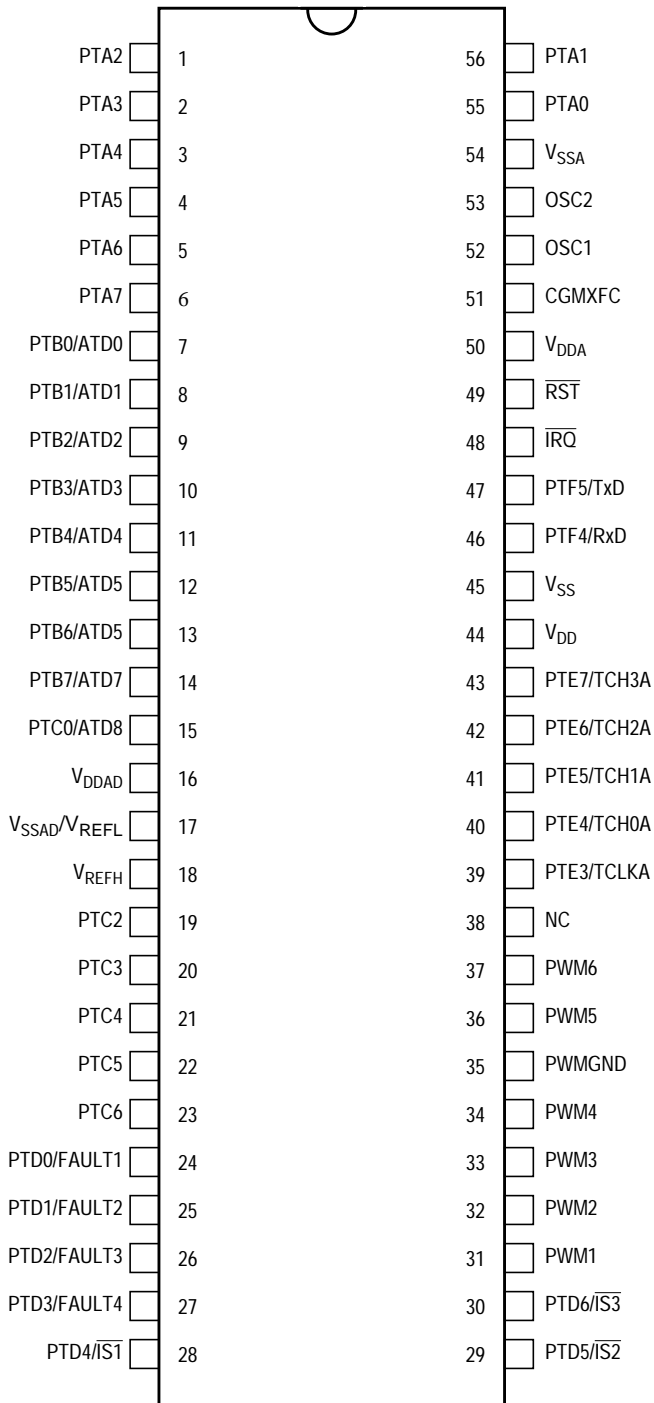
Use this procedure for performing ICP via an external communications circuit in place of this ICS to the target application.

1. Materials required:
  - a. PC with P&E software installed
  - b. Adapter/connector to connect the male end of the 9-pin serial cable to the part on the target application
  - c. RS-232 communications circuit. Also needed is a 5-volt power source to power this circuit (see [Figure 4](#) and [Figure 5](#)).
  - d. Pin assignment diagram (see [Figure 1](#) and [Figure 2](#))
  - e. Monitor mode entry requirements (see [Table 1](#))
  - f. Crystal oscillator on the target or from an external clock source with a value from [Table 2](#)
  - g. Target board must have the ability to perform a power-on reset (POR) not just a reset of the part (required to enter monitor mode).
2. Connections (see [Figure 4](#)):
  - a. 9-pin serial cable from PC to the communications circuit
  - b. V+ pin of the RS-232 part to the  $\overline{\text{IRQ}}$  pin of the part
  - c. Communications pin of HC125 to PTA0 of the part
  - d. Target pin requirements:
    - PTA7 of part to  $V_{SS}$
    - PTC4 of part to  $V_{SS}$
    - PTC3 of the part to  $V_{DD}$  via a pullup resistor
    - PTC2 of the part to  $V_{SS}$  (crystal frequency  $\div 2$ ) or  $V_{DD}$  via pullup resistor (crystal frequency  $\div 4$ ). See [Table 2](#).
    - $\overline{\text{RESET}}$  does not have an internal pullup resistor, so it must be pulled up to  $V_{DD}$  in the application.
  - e. It is assumed that all  $V_{DD}$  and  $V_{SS}$  pins on the part are already connected.

3. Operation — Standard monitor mode entry:
  - a. Launch P&E's WINIDE in the ICS08MRZ software.
  - b. Open desired file (demo file can be used).
  - c. Assemble/Compile the file (see [Figure 6](#)).
  - d. Apply power to the Communications Circuit.
  - e. Turn on power to the target.
  - f. Launch the programmer.
  - g. From "Target Hardware Type," select "Class III" (see [Figure 7](#)).
  - h. From "PC Serial Port Configuration," select the PC port you are using and the appropriate baud rate (see [Table 2](#)).
  - i. From "Target MCU Security Bytes," select appropriate security code (blank part = FF).
  - j. Select "Contact Target with these Settings..."
  - k. Follow the instructions in the "Power Cycle Dialog" window.
  - l. Select appropriate algorithm for the part being used. The high-speed algorithm will not work at 28,800 baud.
  - m. Double click on "Erase Module" – EM (see [Figure 8](#)).
  - n. Double click on "Program Module" – PM.
  - o. Record security bytes. This information can be seen by quitting and then re-entering the programmer. The S19 record will have the same security bytes as the part just programmed as long as it is not changed. The security bytes consist of the information stored in the interrupt vectors, \$FFF6–\$FFFD.
4. Operation — Forced monitor mode entry:
  - a. Blank part with oscillator value from [Table 2](#). See [Figure 5](#).
    - Remove connection to the  $\overline{\text{IRQ}}$  pin from V+ of the RS-232 communications circuit.
    - No connections to PTC2, PTC3, and PTC4 are necessary in this mode.
    - $\overline{\text{IRQ}}$  does not have an internal pullup resistor, so it must be pulled up to  $V_{DD}$  in the application.



**Figure 1. 64-Pin QFP Pin Assignments**



Note: PTC1, PTE0, PTE1, PTE2, PTF0, PTF1, PTF2, and PTF3 are removed from this package.

**Figure 2. 56-Pin SDIP Pin Assignments**



**Table 1. Monitor Mode Entry**

Mode	$\overline{\text{IRQ1}}$ Pin	$\overline{\text{RST}}$ Pin	PTC3 Pin	PTC4 Pin	PTC2 Pin	PTA0 Pin	PTA7 Pin	CGMOUT	Bus Frequency	COP
Normal monitor	$V_{\text{TST}}$	$V_{\text{DD}}$ or $V_{\text{TST}}$	1	0	1	1	0	$\frac{\text{CGMXCLK}}{2}$	$\frac{\text{CGMXCLK}}{2}$	Disabled
Forced monitor	$V_{\text{DD}}$	$V_{\text{DD}}$						$\frac{\text{CGMVCLK}}{2}$		
Normal monitor	$V_{\text{TST}}$	$V_{\text{DD}}$ or $V_{\text{TST}}$	1	0	0	1	0	CGMXCLK	$\frac{\text{CGMXCLK}}{2}$	Disabled
User	$V_{\text{DD}}$	$V_{\text{DD}}$	X	X	X	X	X	—	—	Enabled

**Table 2. Crystal or External Frequency vs. Baud Rate**

Divide by 2 Option (PTC2 to ICS or $V_{\text{SS}}$ )		
Crystal Frequency (MHz)	Internal Bus Frequency (MHz)	Baud Rate
2.4576	1.2288	4800
4.9152	2.4576	9600
7.3728	3.6864	14,400
9.8304	4.9152	19,200
14.7456	7.3728	28,800
Divide by 4 Option (PTC2 to $V_{\text{DD}}$ )		
4.9152	1.2288	4800
9.8304	2.4576	9600
14.7456	3.6864	14,400
19.6608	4.9152	19,200
29.4912	7.3728	28,800

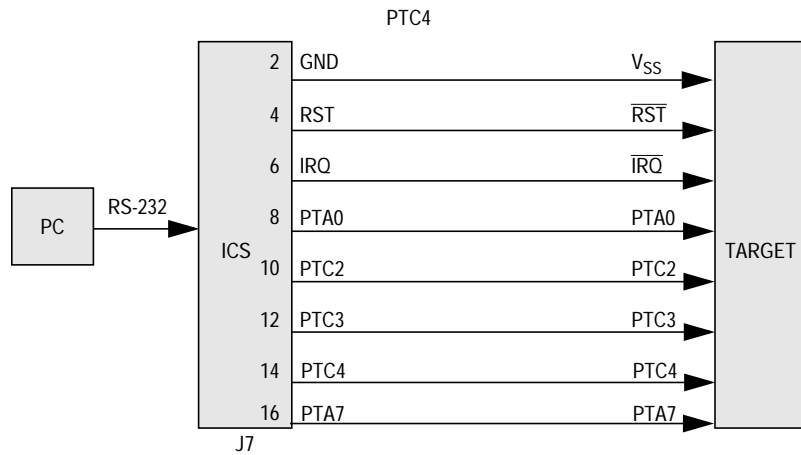


Figure 3. MC68HC908MR16/32 MON08 Connections

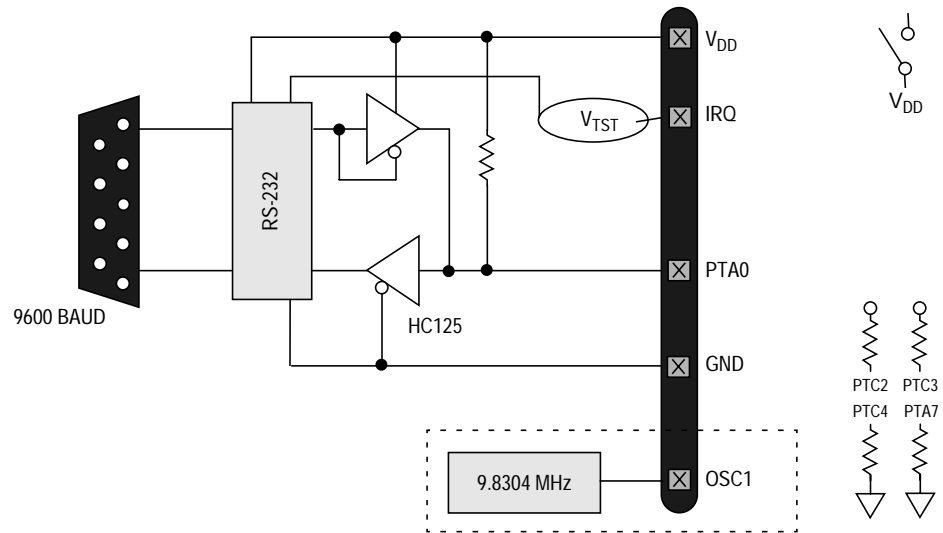
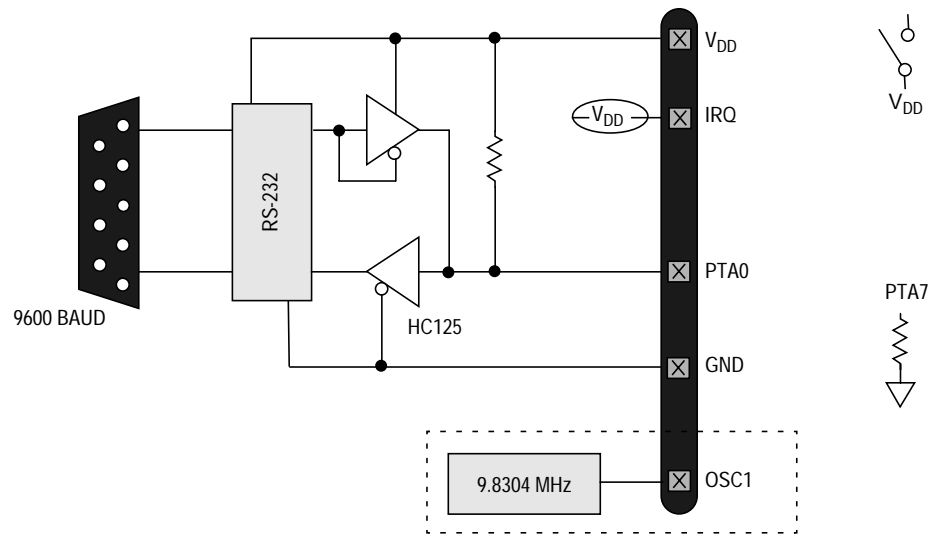


Figure 4. MC68HC908MR16/32 Standard Monitor Mode (9.8304 MHz)

Freescale Semiconductor, Inc.



**Figure 5. MC68HC908MR16/32 Forced Monitor Mode (9.8304 MHz)**

```

WIN IDE - [HC00MR.PPF] - C:\freescalsem\demo\demo_mr.asm
File Edit View Options Search Window Help
; Here is the sample application...
; use $SET directive to define the device that you are using
$SETNOT MR4           ; conditional define for HC00MR4
$SETNOT MR8           ; conditional define for HC00MR8
$SETNOT MR16          ; conditional define for HC00MR16
$SET MR32             ; conditional define for HC00MR32

$SETNOT LOADIRAM

RAMStart EQU $0000
$IF MR4
RAMStart EQU $E000 ; Valid Rom for MR4
$ENDIF
$IF MR8
RAMStart EQU $D000 ; Valid Rom for MR8
$ENDIF
$IF MR16
RAMStart EQU $8000 ; Valid Rom for MR16
$ENDIF
$IF MR32
RAMStart EQU $0000 ; Valid Rom for MR32
$ENDIF

VectorStart EQU $FF02

ADC_Channel EQU 0t
ADC_ENABLE_INT EQU 01000000q ; Bit mask for interrupt enable bit
; in the ADC status/control register

PWM_Channel EQU 1t ; PWM_CHANNEL can be set from 1-6
; here set to PWM1 channel

$Include 'mr_regs.inc'

org RAMStart

temp_long ds 4
temp_word ds 2
    
```

Figure 6. P&E's WINIDE Window

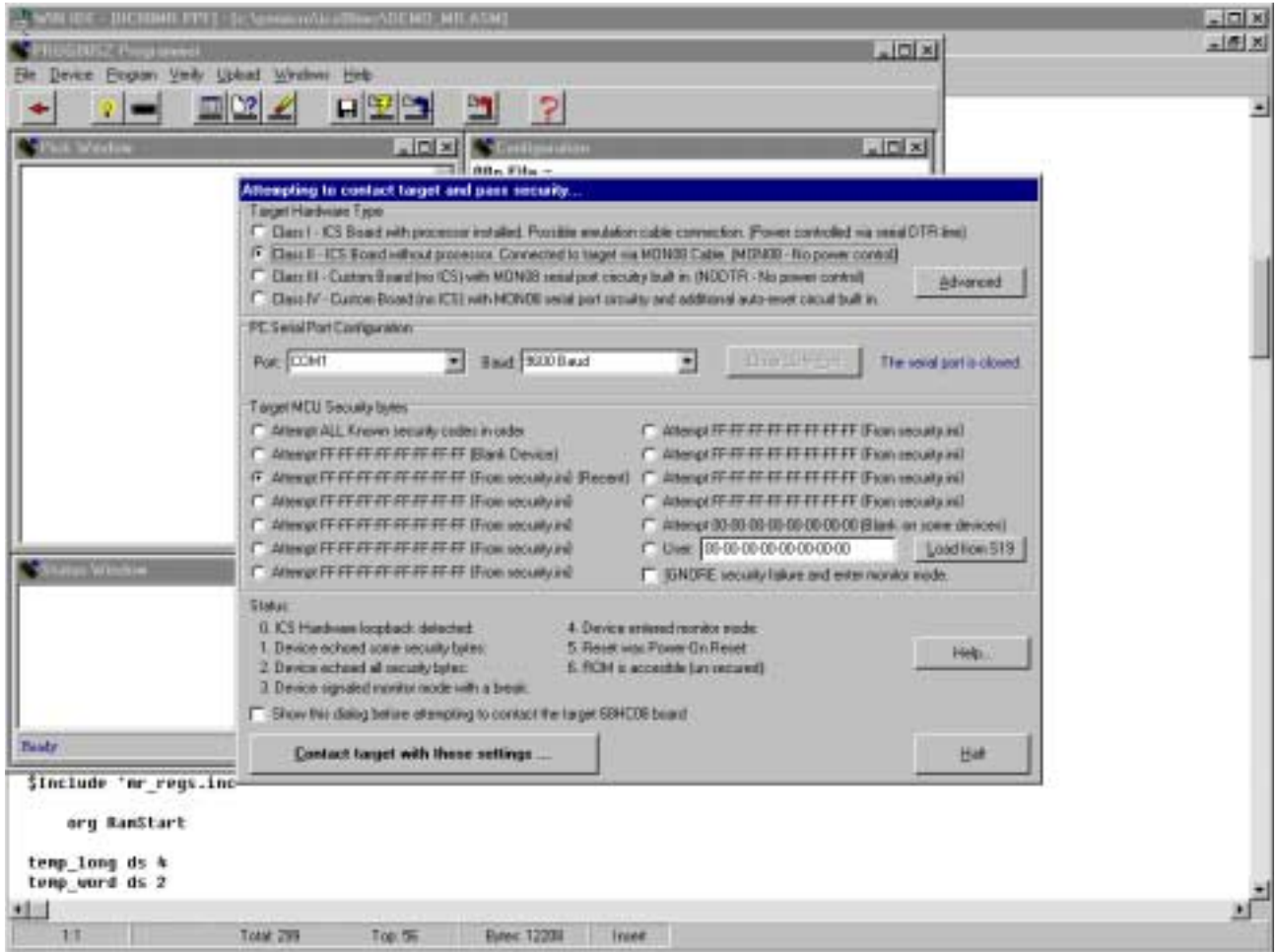


Figure 7. P&E's Target and Security Window

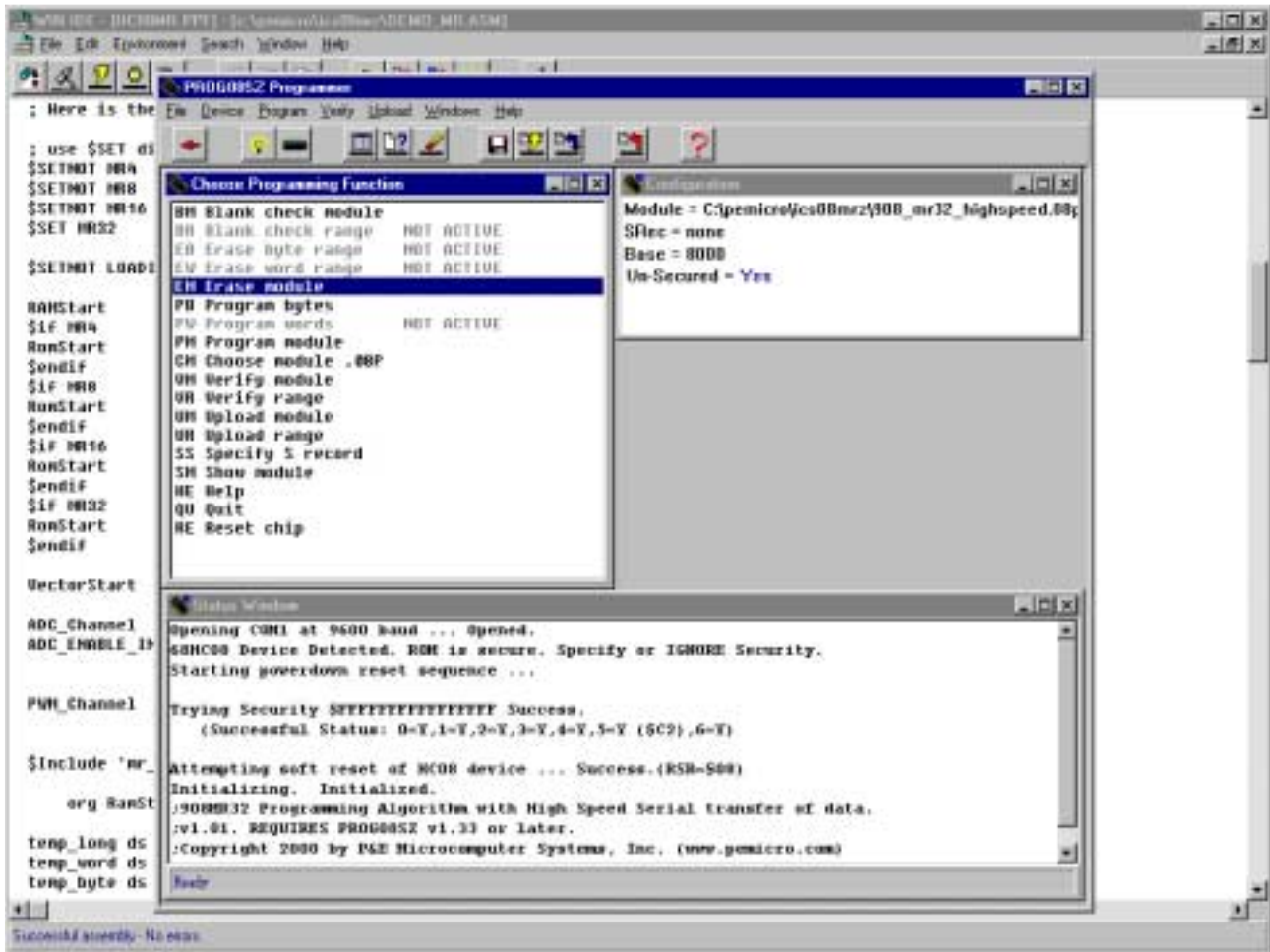



Figure 8. P&E's Programmer Window



Motorola reserves the right to make changes without further notice to any products herein. Motorola makes no warranty, representation or guarantee regarding the suitability of its products for any particular purpose, nor does Motorola assume any liability arising out of the application or use of any product or circuit, and specifically disclaims any and all liability, including without limitation consequential or incidental damages. "Typical" parameters which may be provided in Motorola data sheets and/or specifications can and do vary in different applications and actual performance may vary over time. All operating parameters, including "Typicals" must be validated for each customer application by customer's technical experts. Motorola does not convey any license under its patent rights nor the rights of others. Motorola products are not designed, intended, or authorized for use as components in systems intended for surgical implant into the body, or other applications intended to support or sustain life, or for any other application in which the failure of the Motorola product could create a situation where personal injury or death may occur. Should Buyer purchase or use Motorola products for any such unintended or unauthorized application, Buyer shall indemnify and hold Motorola and its officers, employees, subsidiaries, affiliates, and distributors harmless against all claims, costs, damages, and expenses, and reasonable attorney fees arising out of, directly or indirectly, any claim of personal injury or death associated with such unintended or unauthorized use, even if such claim alleges that Motorola was negligent regarding the design or manufacture of the part. Motorola and  are registered trademarks of Motorola, Inc. Motorola, Inc. is an Equal Opportunity/Affirmative Action Employer.

**How to reach us:**

**USA/EUROPE/Locations Not Listed:** Motorola Literature Distribution; P.O. Box 5405, Denver, Colorado 80217. 1-800-521-6274 or 480-768-2130

**JAPAN:** Motorola Japan Ltd.; SPS, Technical Information Center, 3-20-1, Minami-Azabu, Minato-ku, Tokyo 106-8573 Japan. 81-3-3440-3569

**ASIA/PACIFIC:** Motorola Semiconductors H.K. Ltd.; Silicon Harbour Centre, 2 Dai King Street, Tai Po Industrial Estate, Tai Po, N.T., Hong Kong.  
852-26668334

**HOME PAGE:** <http://motorola.com/semiconductors/>

**MOTOROLA**

© Motorola, Inc., 2000, 2003

EB370/D

**For More Information On This Product,  
Go to: [www.freescale.com](http://www.freescale.com)**