



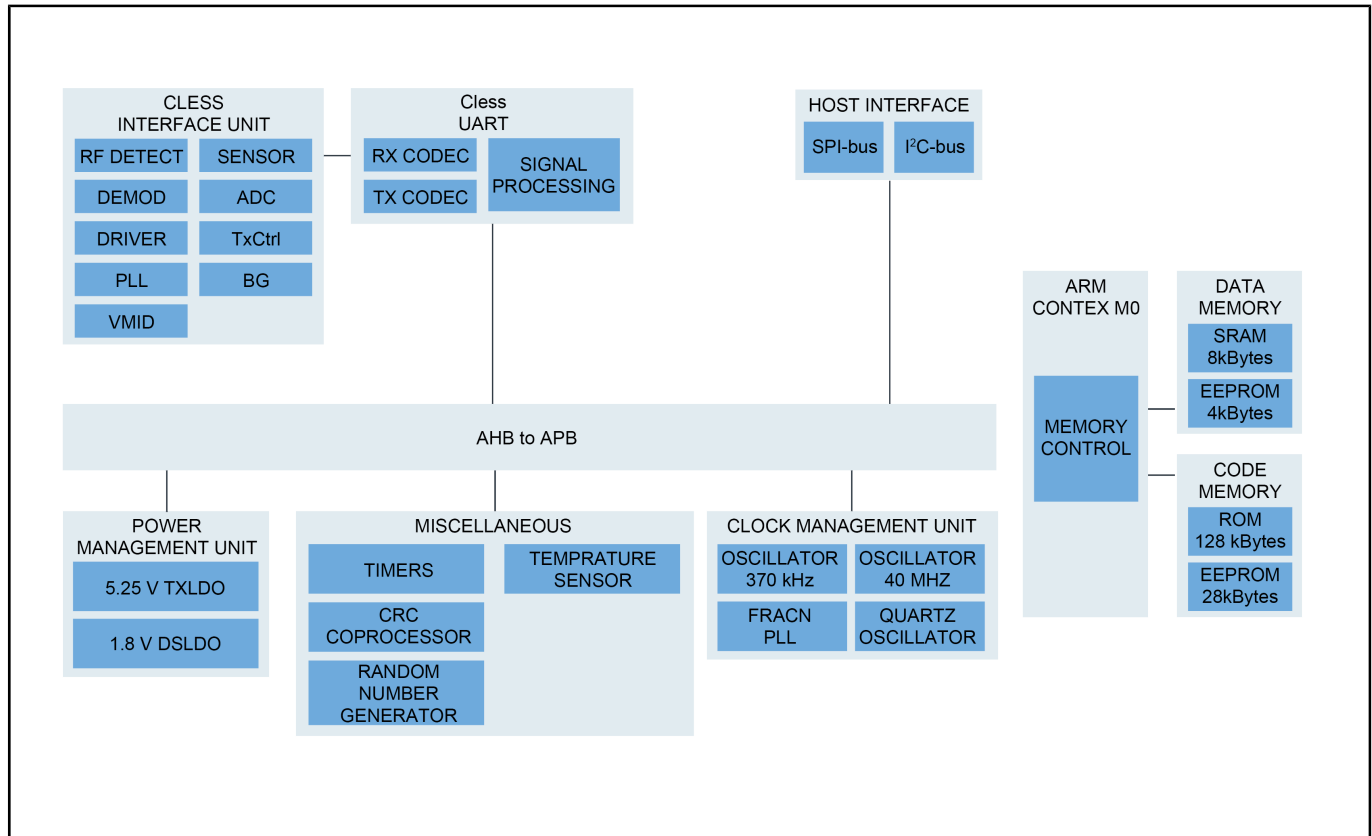
带集成固件和**NCI**接口的**NFC**即插即用控制器

PN7160

Last Updated: Nov 28, 2023

PN7160专为在各种系统实现快速集成而设计，支持所有符合**NFC Forum**的模式，包括**Android**和**Linux**驱动程序，并支持实时操作系统和无操作系统的应用（PN7160不符合EMVCo，需使用PN5180、PN5190或PN7220）。嵌入式**NFC**固件减少了对主机交互的需求，并最大限度缩小了代码尺寸，使设计更轻松。PN7160具有**I²C**或**SPI**接口，与广受欢迎的**MCU**兼容，包括LPC、Kinetis和i.MX。PN7161版本增加了对**Apple ECP**的支持。

PN7160结构框图 Block Diagram



View additional information for [带集成固件和NCI接口的NFC即插即用控制器](#).

Note: The information on this document is subject to change without notice.

www.nxp.com

NXP and the NXP logo are trademarks of NXP B.V. All other product or service names are the property of their respective owners. The related technology may be protected by any or all of patents, copyrights, designs and trade secrets. All rights reserved. © 2024 NXP B.V.