



LCD控制器/驱动器

PCF2113X

Archived

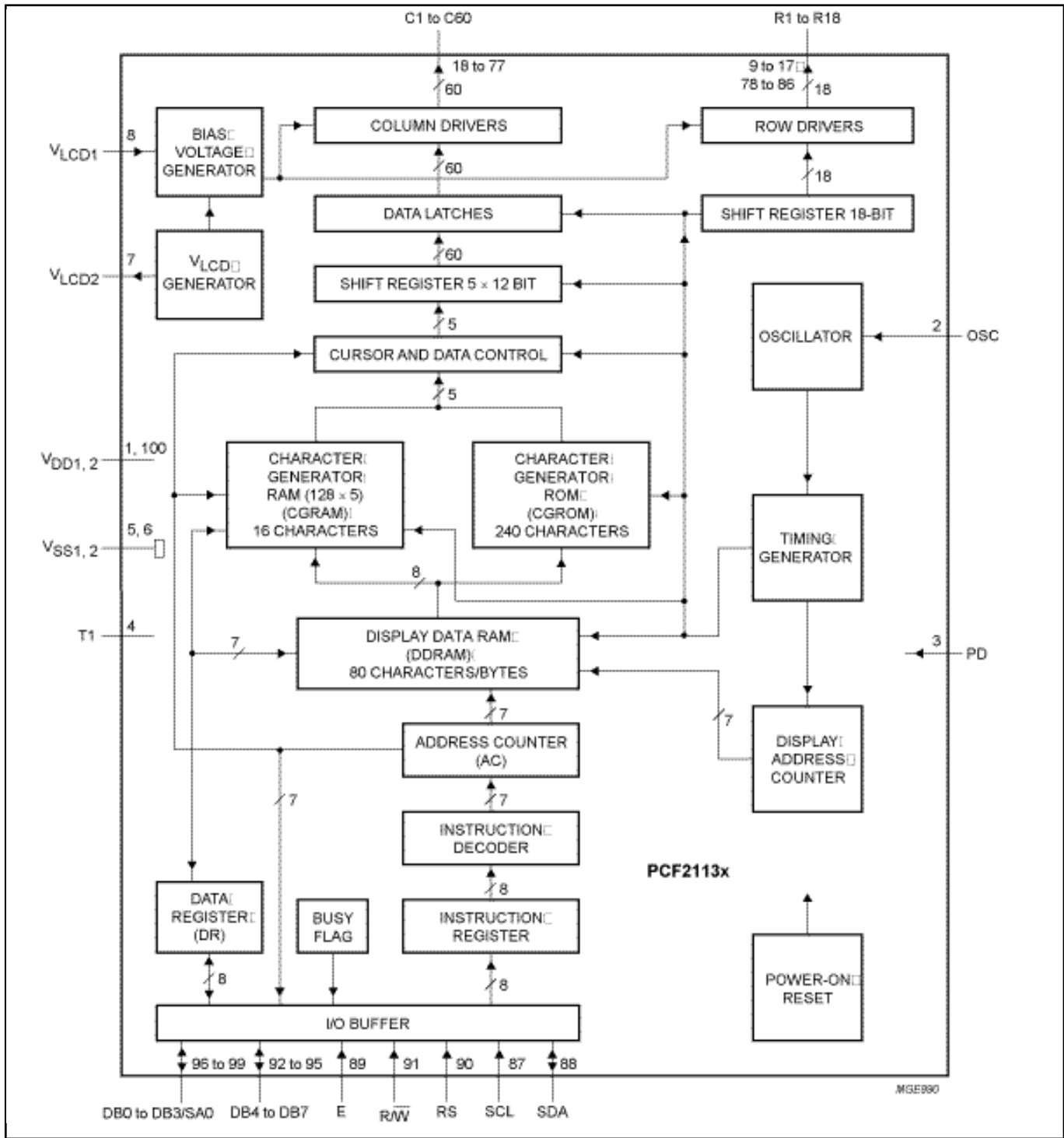
本页面包含有关样品阶段产品的信息。此处的规格和信息如有更改，恕不另行通知。如需了解其他信息，请联系支持人员或您的销售代表。

Last Updated: Jul 25, 2023

PCF2113x是一款低功率CMOS LCD控制器和驱动器，为驱动5 x 8点格式的2行12字符或1行24字符点阵LCD显示器而设计。单个芯片提供了显示所需的所有功能，包括片上生成LCD偏置电压，从而实现最少的外部组件和更低的系统电流消耗。PCF2113x通过4位或8位总线或者通过2线I²C总线连接大多数微控制器。芯片包含字符生成器并显示字母数字字符和假名（日语）字符。

PCF2113x中的字母“x”表示内置字符集。可按要求制定各种字符集。

PCF2113AU, PCF2113DH, PCF2113DU, PCF2113EU, PCF2113WU Block Diagram



View additional information for [LCD控制器/驱动器](#).

Note: The information on this document is subject to change without notice.

www.nxp.com

NXP and the NXP logo are trademarks of NXP B.V. All other product or service names are the property of their respective owners. The related technology may be protected by any or all of patents, copyrights, designs and trade secrets. All rights reserved. © 2024 NXP B.V.